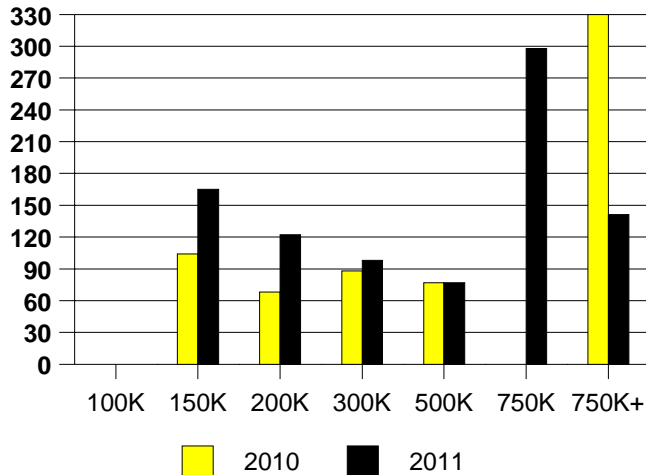
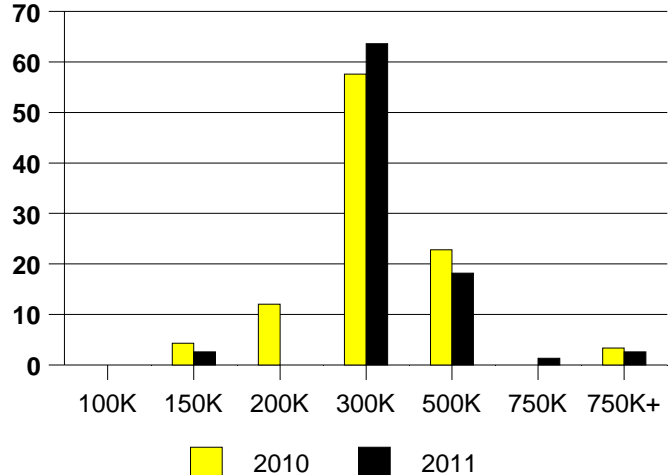


	<u>2010</u>	<u>2011</u>
Total Sold Volume	\$ 26,158,016	\$ 22,727,163
Number of Sales	92	77
Median Sale Price	\$ 260,328	\$ 253,000

**DAYS ON THE MARKET (ADDISON)**



**ADDISON MKT SHARE BY PRICE RANGE**



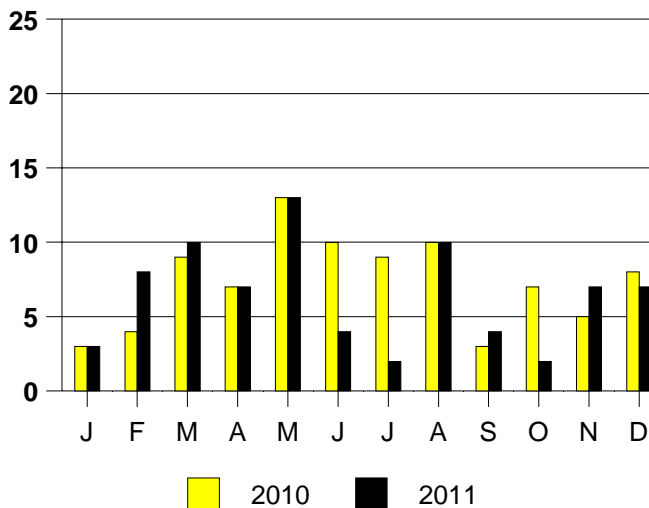
**SALE/LIST PRICE RATIO**

0K-100K	NONE
101K-150K	96.9%
151K-200K	95.0%
201K-300K	97.0%
301K-500K	95.5%
501K-750K	100.0%
751K+	88.5%

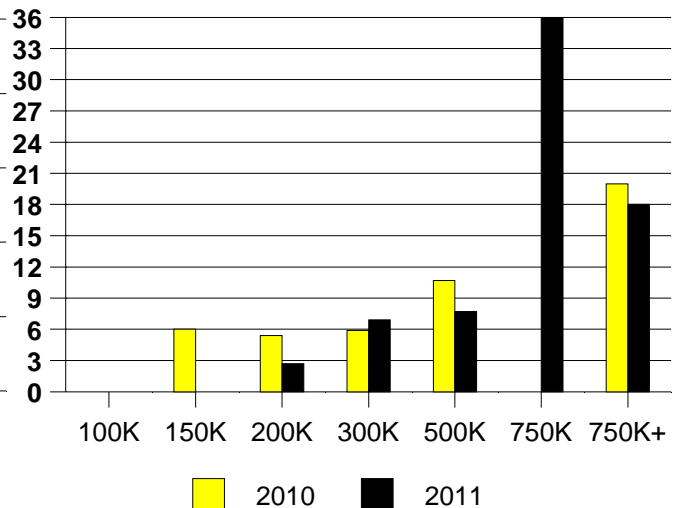
**AVERAGE OVERPRICING**  
Original List Price to Sale Price

2010	5.4%
2011	7.5%

**ADDISON MONTHLY SALES**

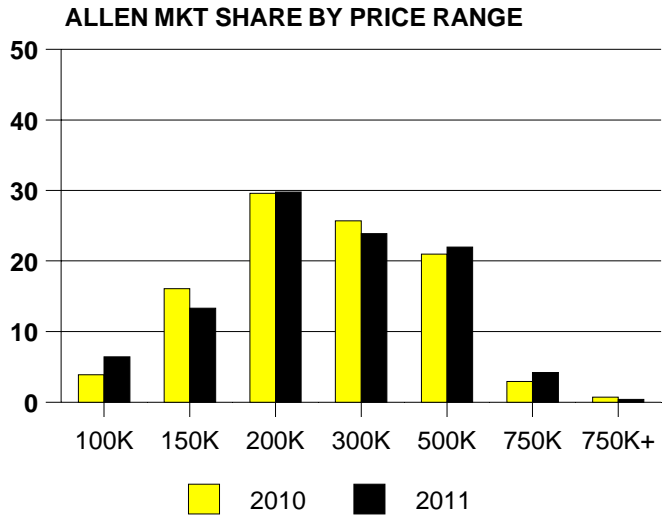
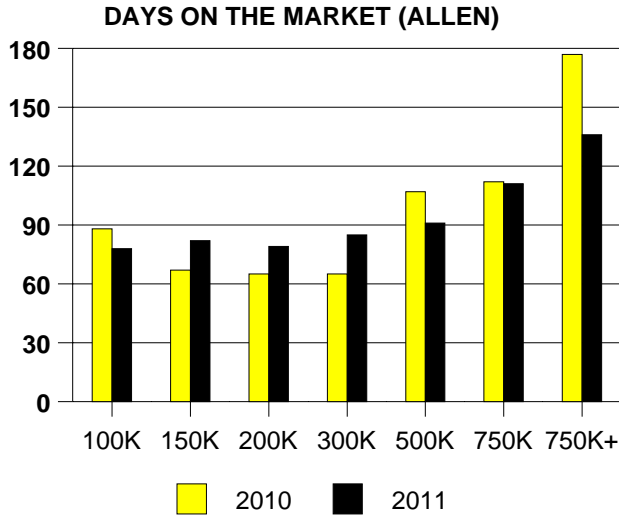


Inventory not shown where no sales  
**ADDISON MONTHS OF INVENTORY**



NTREIS Sold informaton as of 01/03/2012

	<u>2010</u>	<u>2011</u>
Total Sold Volume	\$307,772,616	\$ 307,590,751
Number of Sales	1266	1257
Median Sale Price	\$ 201,500	\$ 202,000



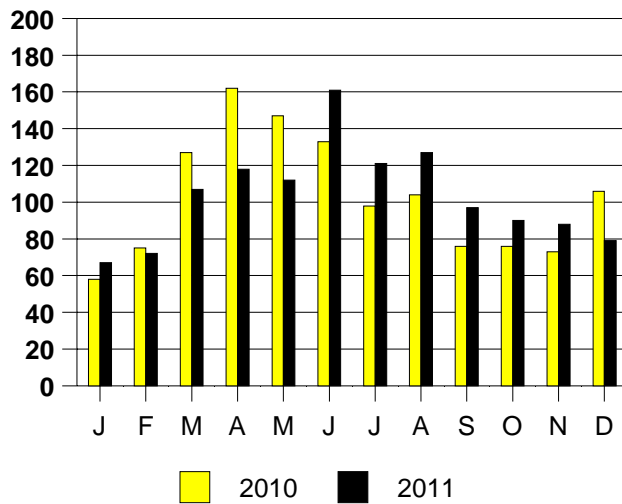
**SALE/LIST PRICE RATIO**

0K-100K	95.4%
101K-150K	97.2%
151K-200K	97.7%
201K-300K	96.7%
301K-500K	94.9%
501K-750K	93.5%
751K+	93.9%

**AVERAGE OVERPRICING**  
Original List Price to Sale Price

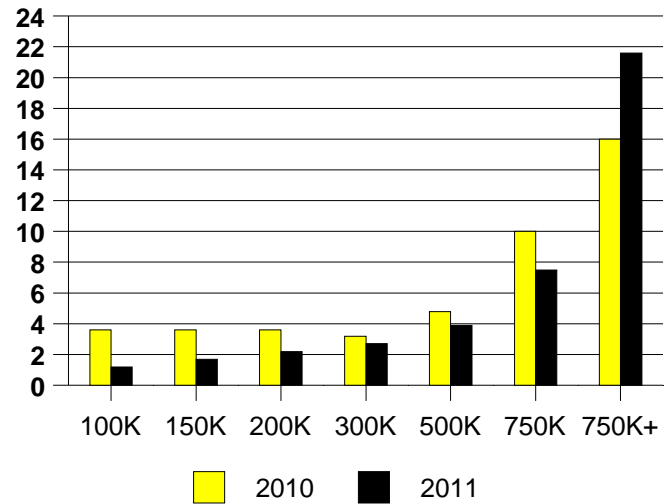
2010	7.0%
2011	6.9%

**ALLEN MONTHLY SALES**



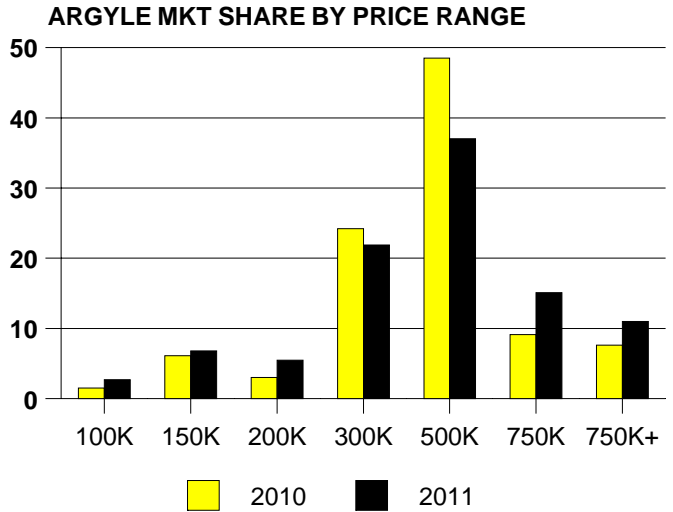
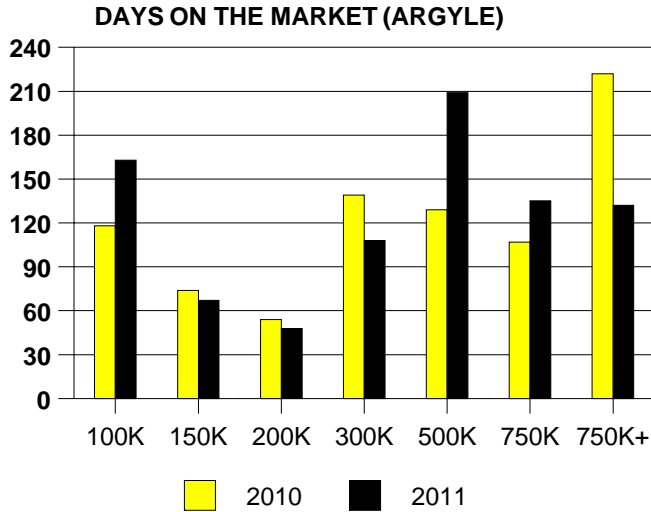
Inventory not shown where no sales

**ALLEN MONTHS OF INVENTORY**



NTREIS Sold informaton as of 01/03/2012

	<u>2010</u>	<u>2011</u>
Total Sold Volume	\$ 26,617,359	\$ 30,540,569
Number of Sales	66	73
Median Sale Price	\$ 347,000	\$ 370,000



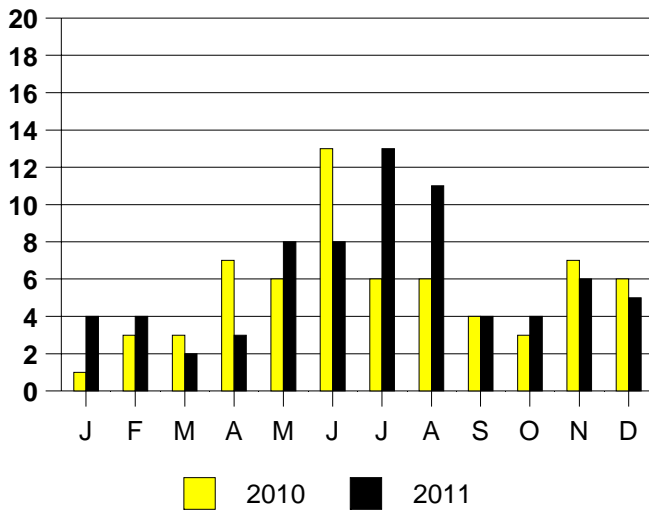
**SALE/LIST PRICE RATIO**

0K-100K	97.2%
101K-150K	96.6%
151K-200K	98.0%
201K-300K	96.4%
301K-500K	95.6%
501K-750K	96.7%
751K+	94.6%

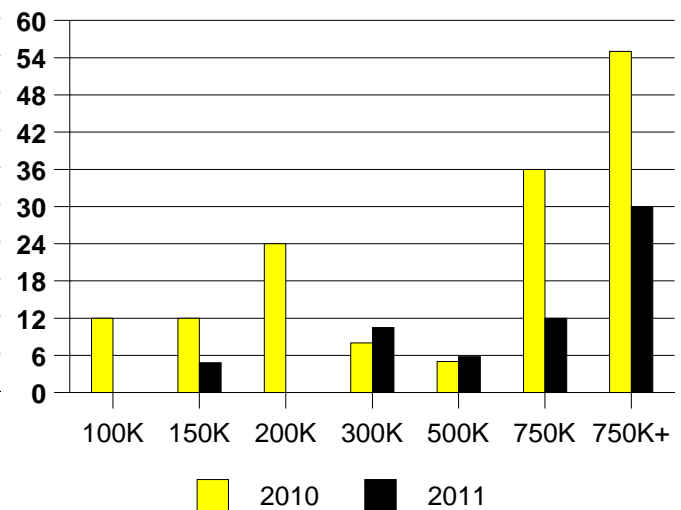
**AVERAGE OVERPRICING**  
Original List Price to Sale Price

2010	9.2%
2011	10.3%

**ARGYLE MONTHLY SALES**



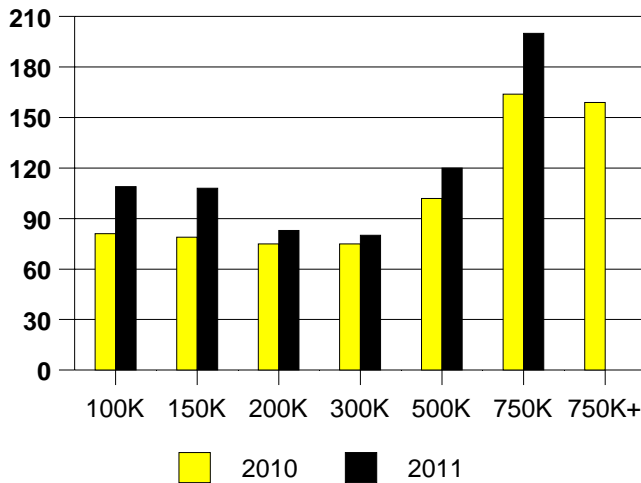
Inventory not shown where no sales  
**ARGYLE MONTHS OF INVENTORY**



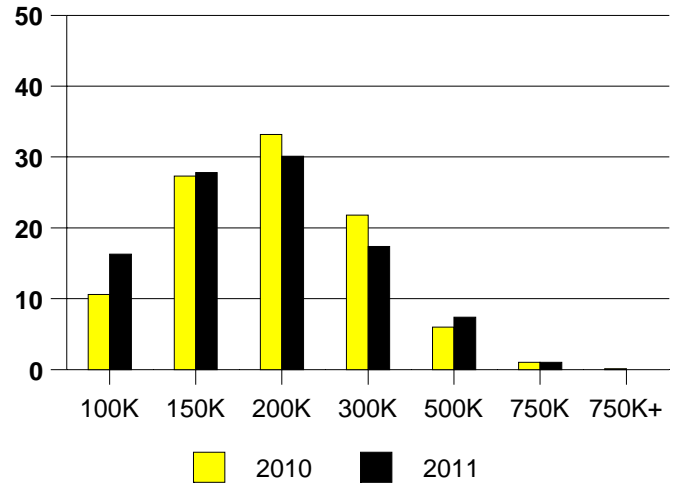
NTREIS Sold informaton as of 01/03/2012

	<u>2010</u>	<u>2011</u>
Total Sold Volume	\$ 181,520,188	\$ 189,738,476
Number of Sales	998	1076
Median Sale Price	\$ 165,700	\$ 160,000

**DAYS ON MARKET(CARROLLTON)**



**CARROLLTON MKT SHARE BY PRICE RANGE**



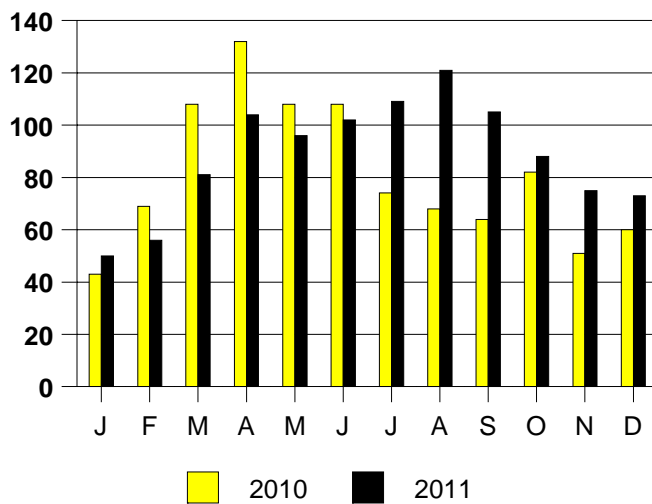
**SALE/LIST PRICE RATIO**

0K-100K	94.5%
101K-150K	97.2%
151K-200K	97.3%
201K-300K	96.8%
301K-500K	95.6%
501K-750K	96.3%
751K+	NONE

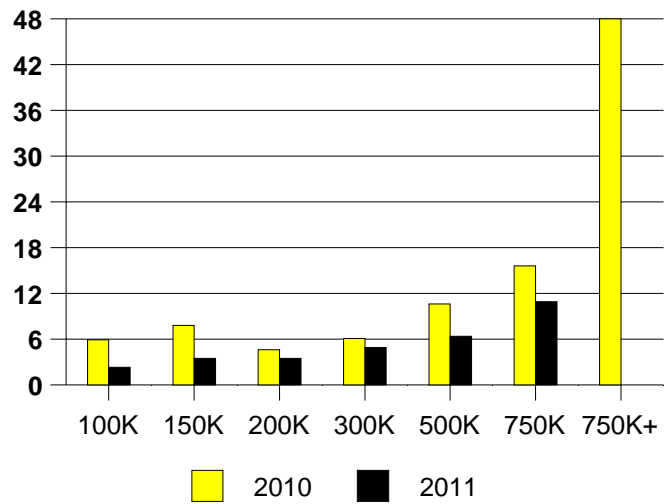
**AVERAGE OVERPRICING**  
Original List Price to Sale Price

2010	7.9%
2011	9.7%

**CARROLLTON MONTHLY SALES**



**CARROLLTON MONTHS OF INVENTORY**

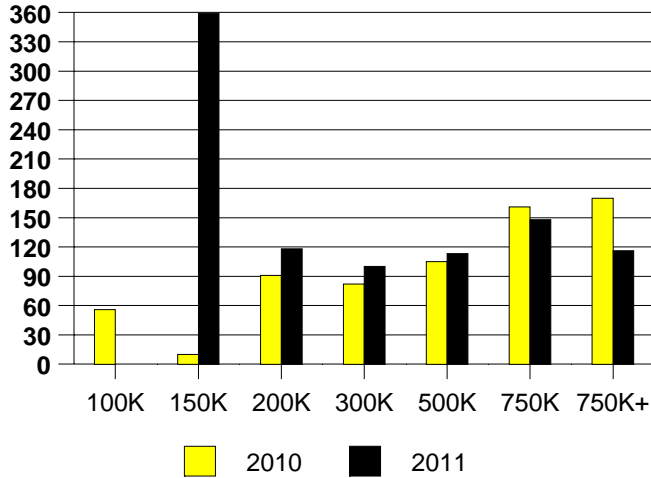


Inventory not shown where no sales

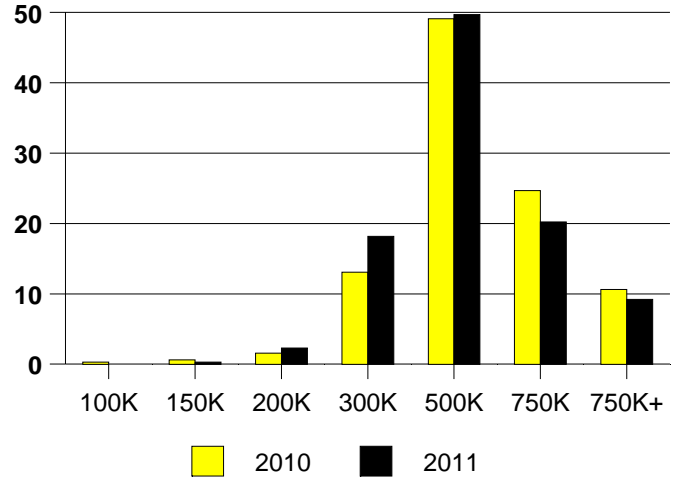
NTREIS Sold informaton as of 01/03/2012

	<u>2010</u>	<u>2011</u>
Total Sold Volume	\$ 151,697,149	\$ 161,259,418
Number of Sales	320	346
Median Sale Price	\$ 419,950	\$ 405,500

**DAYS ON THE MARKET (COLLEYVILLE)**



**COLLEYVILLE MKT SHARE BY PRICE RANGE**



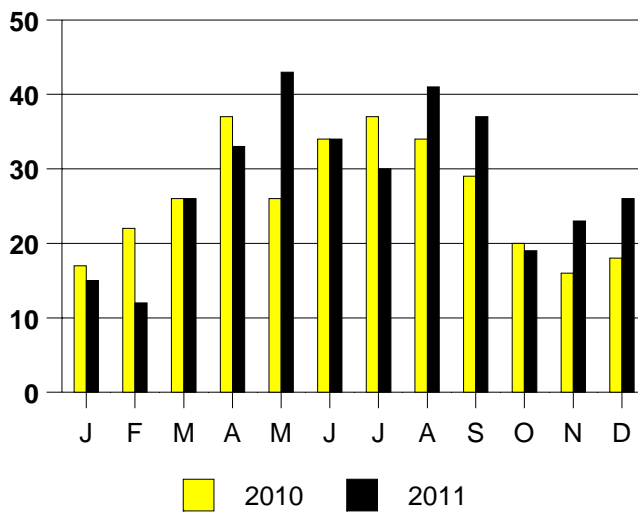
**SALE/LIST PRICE RATIO**

0K-100K	NONE
101K-150K	88.0%
151K-200K	96.8%
201K-300K	96.8%
301K-500K	96.3%
501K-750K	96.5%
751K+	97.4%

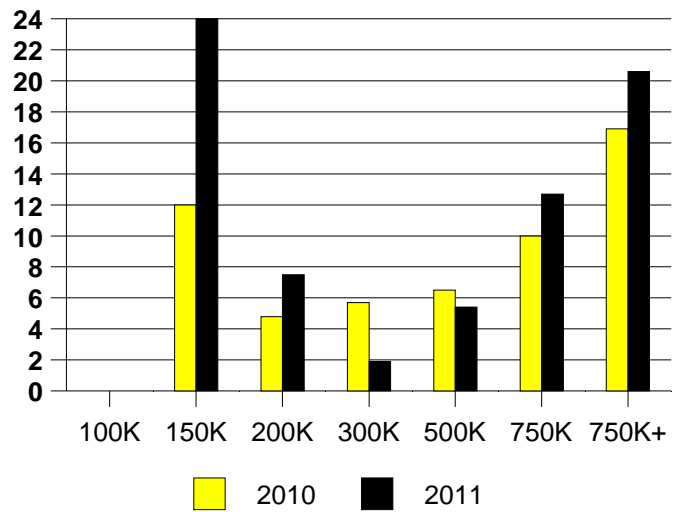
**AVERAGE OVERPRICING**  
Original List Price to Sale Price

2010	8.5%
2011	7.9%

**COLLEYVILLE MONTHLY SALES**



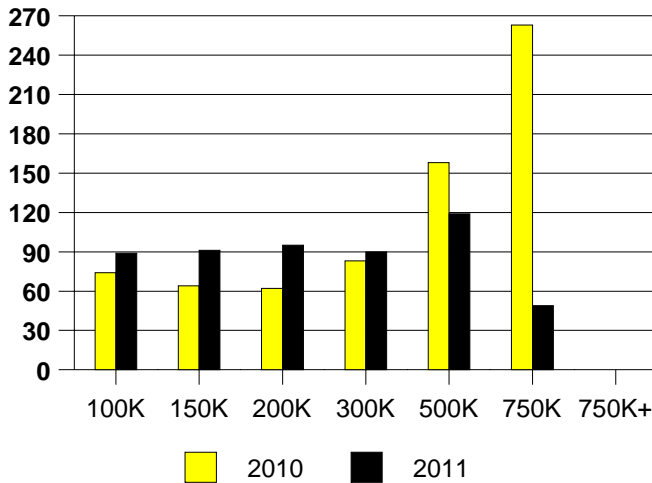
Inventory not shown where no sales  
**COLLEYVILLE MONTHS OF INVENTORY**



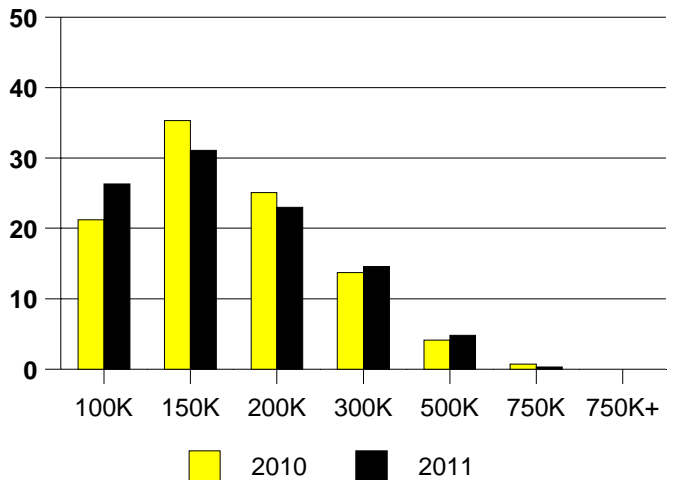
NTREIS Sold informaton as of 01/03/2012

	<u>2010</u>	<u>2011</u>
Total Sold Volume	\$ 68,551,956	\$ 59,983,806
Number of Sales	439	396
Median Sale Price	\$ 139,500	\$ 139,900

DAYS ON THE MARKET (COLONY)



COLONY MKT SHARE BY PRICE RANGE



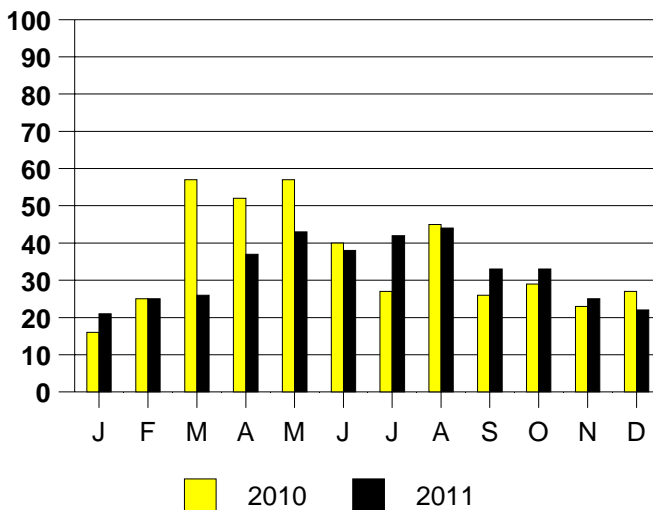
SALE/LIST PRICE RATIO

0K-100K	96.6%
101K-150K	97.8%
151K-200K	97.9%
201K-300K	98.2%
301K-500K	95.2%
501K-750K	97.7%
751K+	NONE

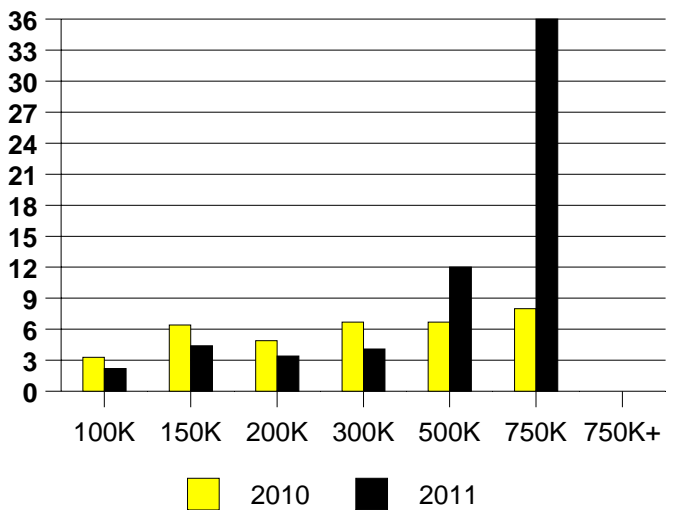
AVERAGE OVERPRICING  
Original List Price to Sale Price

2010	5.9%
2011	7.4%

THE COLONY MONTHLY SALES



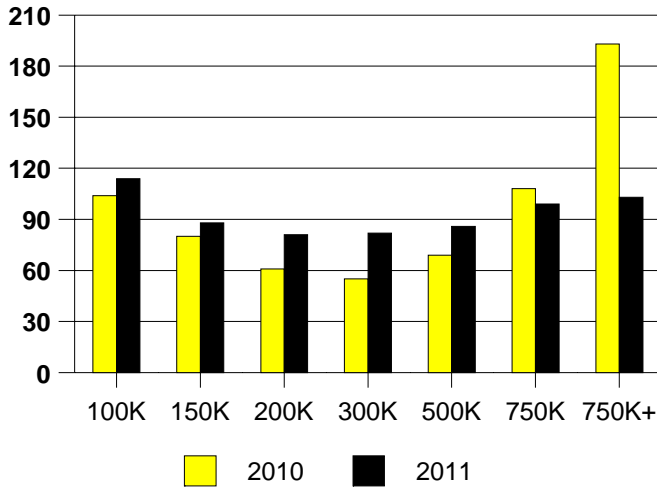
Inventory not shown where no sales  
THE COLONY MONTHS OF INVENTORY



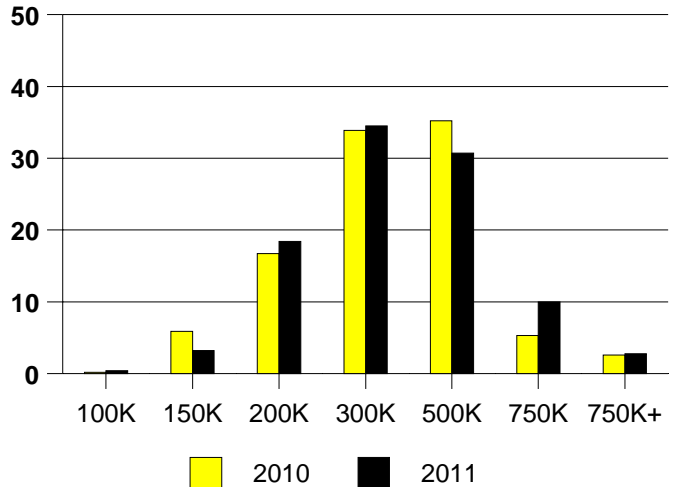
NTREIS Sold informaton as of 01/03/2012

	<u>2010</u>	<u>2011</u>
Total Sold Volume	\$ 141,139,243	\$ 153,124,040
Number of Sales	454	472
Median Sale Price	\$ 282,500	\$ 283,000

**DAYS ON THE MARKET (COPPELL)**



**COPPELL MKT SHARE BY PRICE RANGE**



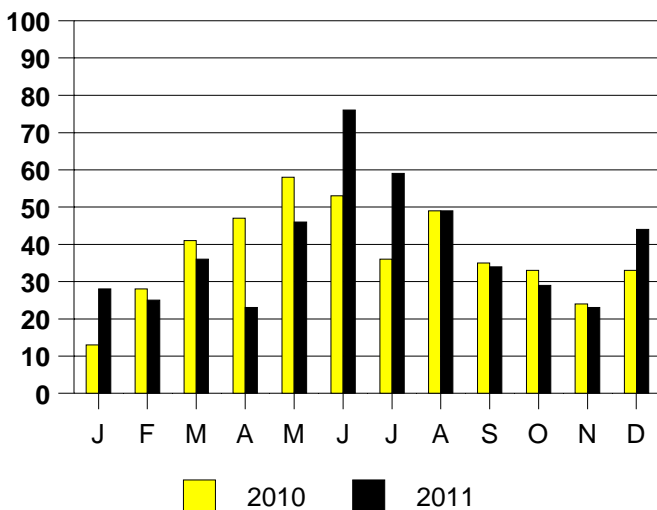
**SALE/LIST PRICE RATIO**

0K-100K	89.8%
101K-150K	91.9%
151K-200K	96.9%
201K-300K	97.0%
301K-500K	97.5%
501K-750K	96.1%
751K+	95.5%

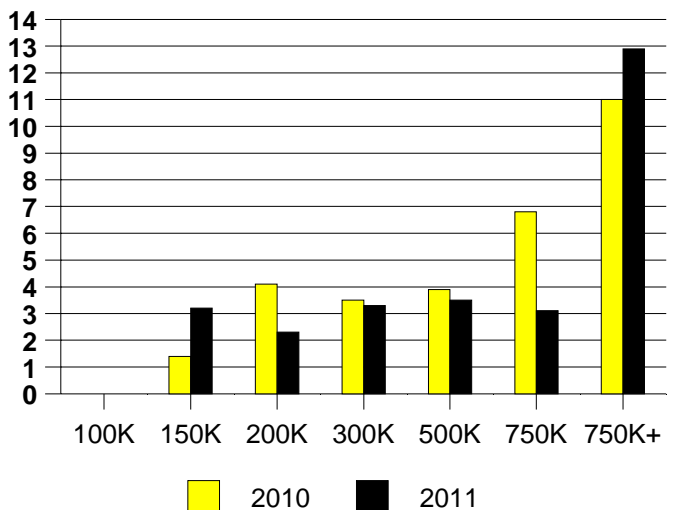
**AVERAGE OVERPRICING**  
Original List Price to Sale Price

2010	5.5%
2011	6.3%

**COPPELL MONTHLY SALES**



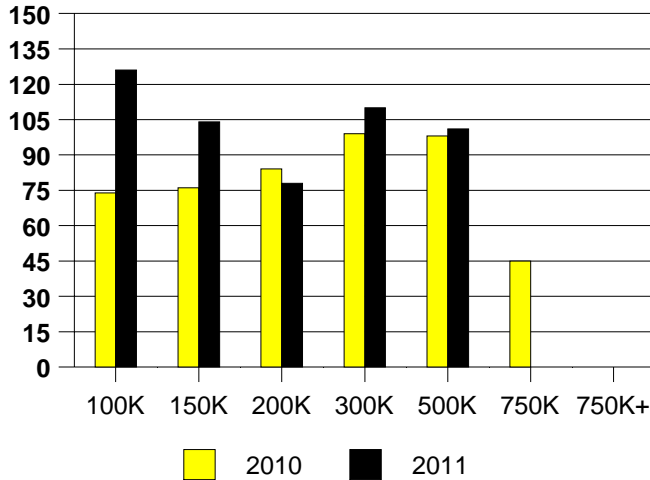
Inventory not shown where no sales  
**COPPELL MONTHS OF INVENTORY**



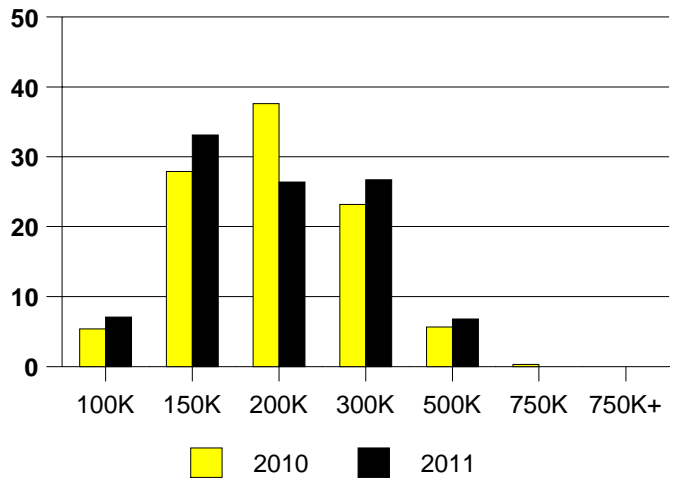
NTREIS Sold informaton as of 01/03/2012

	<u>2010</u>	<u>2011</u>
Total Sold Volume	\$ 54,907,494	\$ 53,922,059
Number of Sales	298	296
Median Sale Price	\$ 166,625	\$ 164,500

DAYS ON THE MARKET (CORINTH)



CORINTH MKT SHARE BY PRICE RANGE



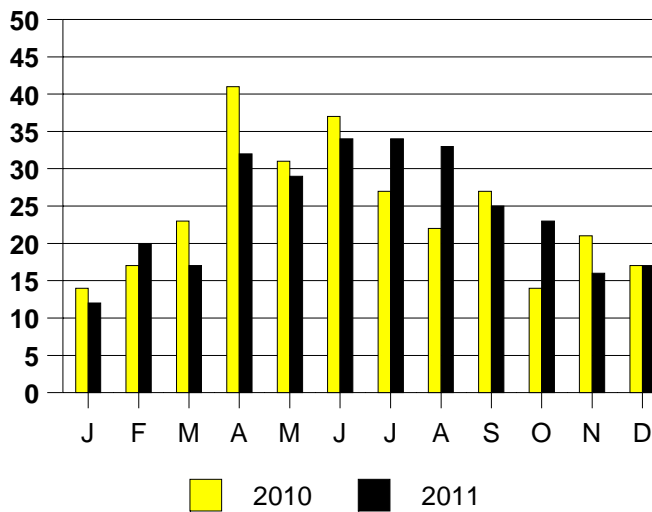
SALE/LIST PRICE RATIO

0K-100K	95.3%
101K-150K	97.7%
151K-200K	98.2%
201K-300K	96.4%
301K-500K	93.4%
501K-750K	NONE
751K+	NONE

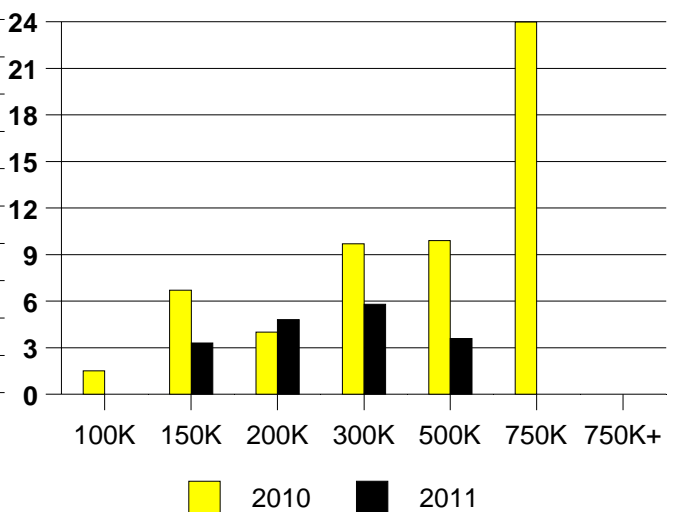
AVERAGE OVERPRICING  
Original List Price to Sale Price

2010	6.5%
2011	7.7%

CORINTH MONTHLY SALES



Inventory not shown where no sales  
CORINTH MONTHS OF INVENTORY

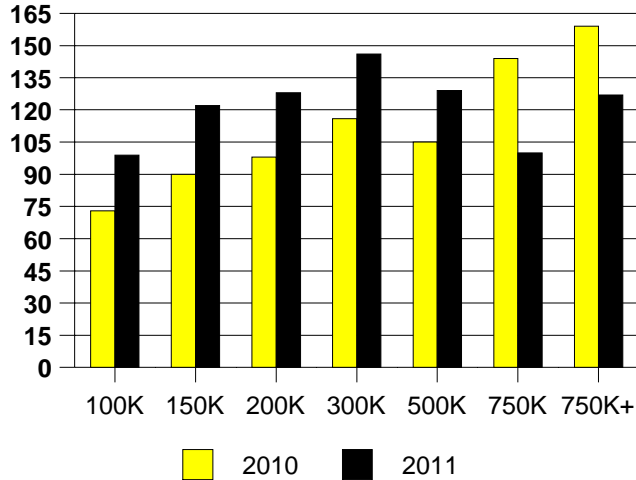


NTREIS Sold informaton as of 01/03/2012

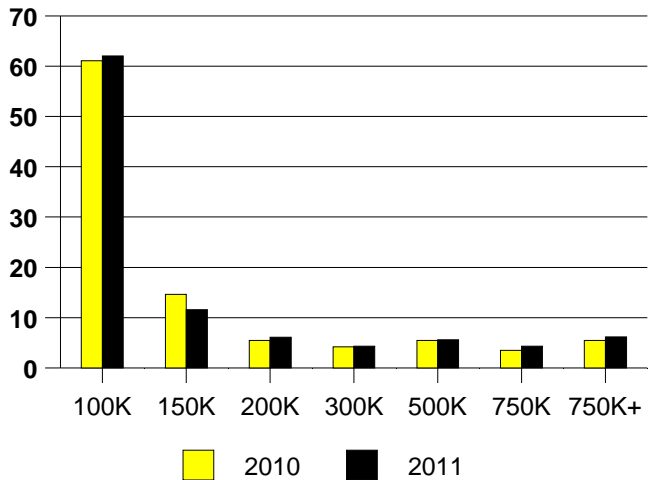


	<u>2010</u>	<u>2011</u>
Total Sold Volume	\$ 233,634,068	\$ 230,428,351
Number of Sales	1243	1220
Median Sale Price	\$ 79,000	\$ 76,000

DAYS ON THE MARKET (DALLAS)



DALLAS MKT SHARE BY PRICE RANGE



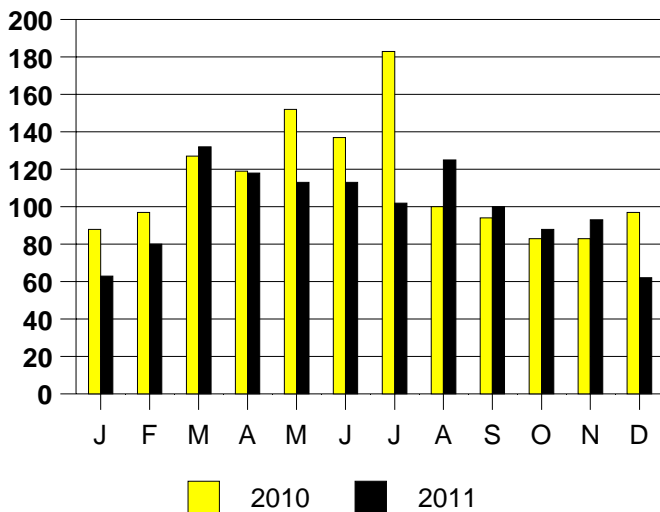
SALE/LIST PRICE RATIO

0K-100K	95.7%
101K-150K	97.4%
151K-200K	97.4%
201K-300K	94.3%
301K-500K	94.6%
501K-750K	95.5%
751K+	94.6%

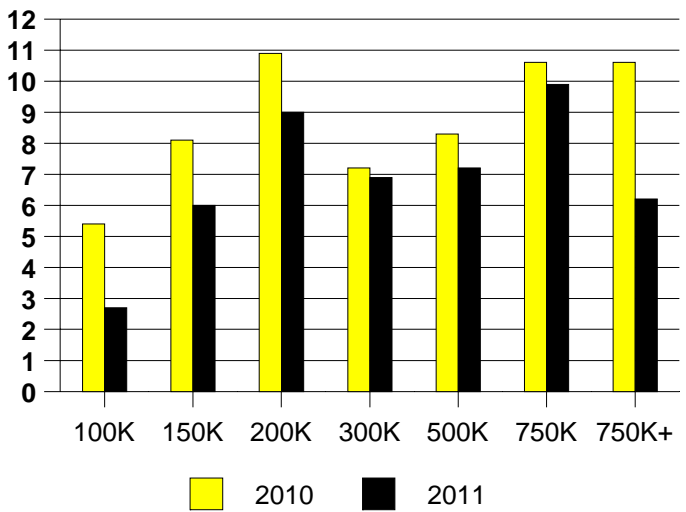
AVERAGE OVERPRICING  
Original List Price to Sale Price

2010	11.7%
2011	14.0%

DALLAS MONTHLY SALES



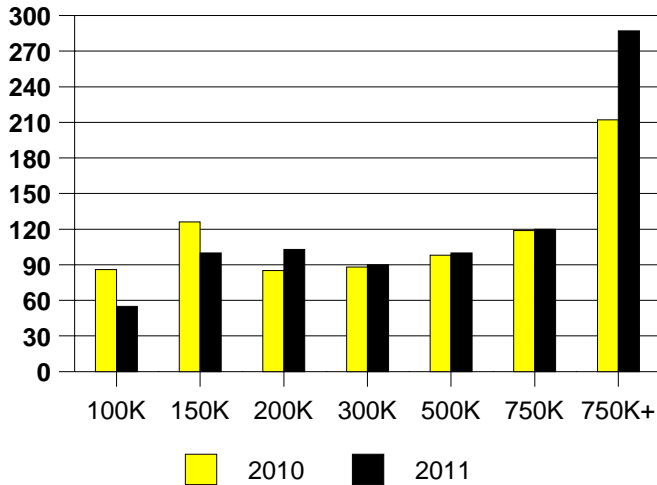
Inventory not shown where no sales  
DALLAS MONTHS OF INVENTORY



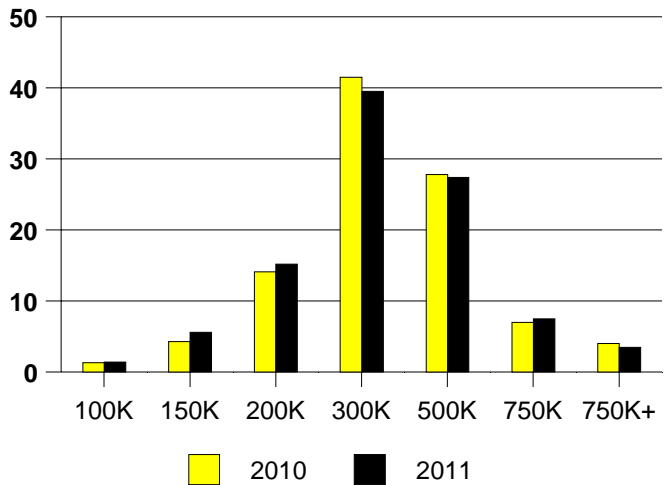
NTREIS Sold informaton as of 01/03/2012

	<u>2010</u>	<u>2011</u>
Total Sold Volume	\$ 249,081,813	\$ 260,974,781
Number of Sales	773	803
Median Sale Price	\$ 269,000	\$ 267,000

**DAYS ON THE MARKET (AREA 10)**



**AREA 10 MKT SHARE BY PRICE RANGE**



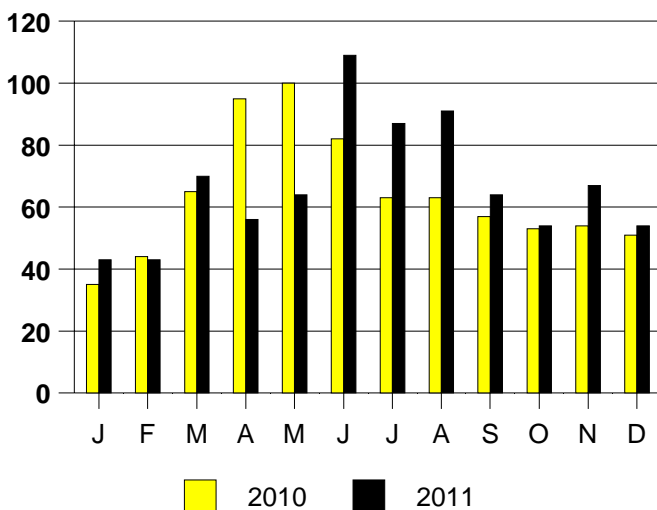
**SALE/LIST PRICE RATIO**

0K-100K	94.4%
101K-150K	93.2%
151K-200K	95.3%
201K-300K	96.8%
301K-500K	96.1%
501K-750K	95.1%
751K+	96.0%

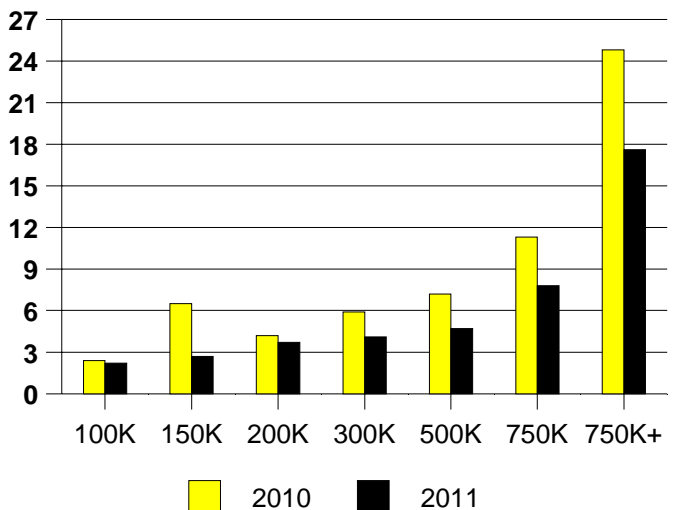
**AVERAGE OVERPRICING**  
Original List Price to Sale Price

2010	9.0%
2011	9.6%

**AREA 10 MONTHLY SALES**

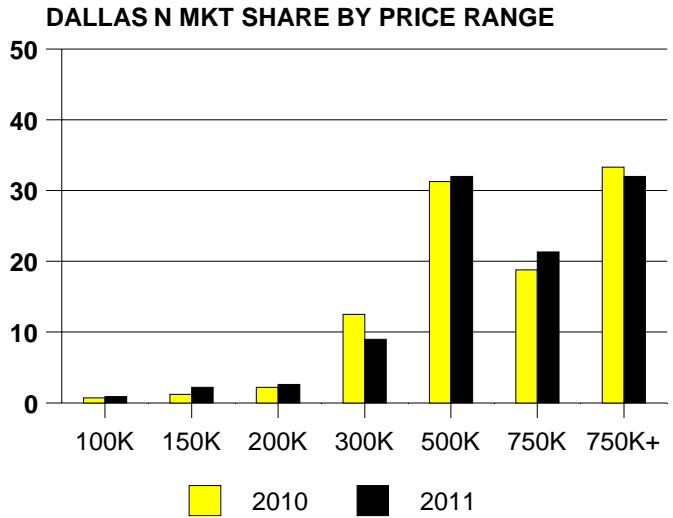
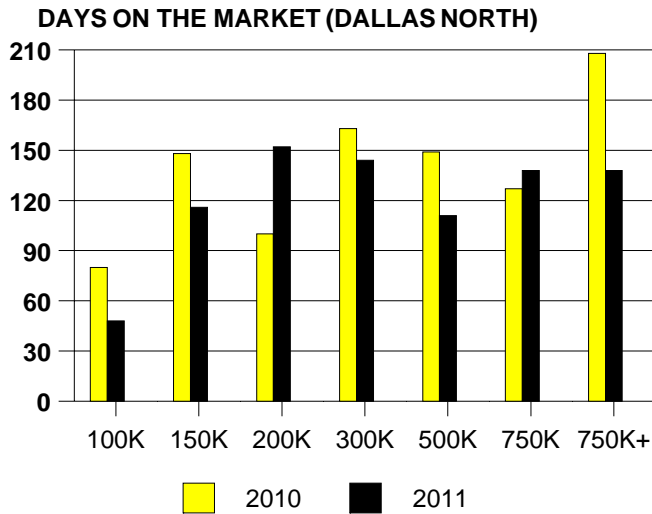


**Inventory not shown where no sales**  
**AREA 10 MONTHS OF INVENTORY**



NTREIS Sold informaton as of 01/03/2012

	<u>2010</u>	<u>2011</u>
Total Sold Volume	\$ 463,124,397	\$ 444,200,072
Number of Sales	600	578
Median Sale Price	\$ 525,000	\$ 525,000

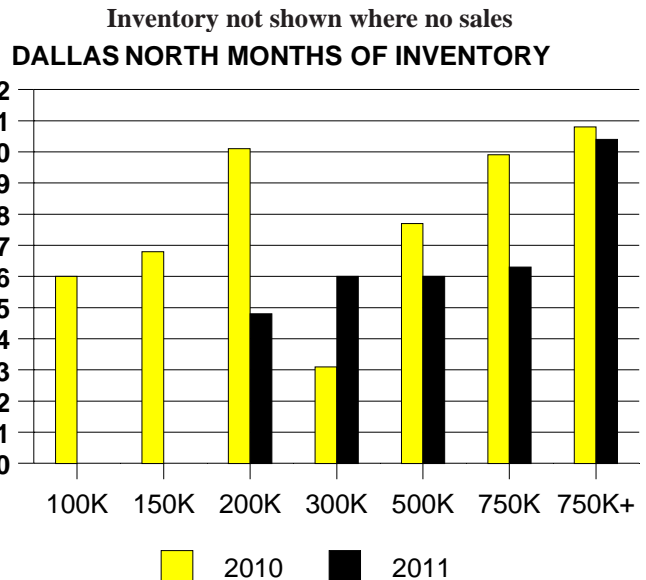
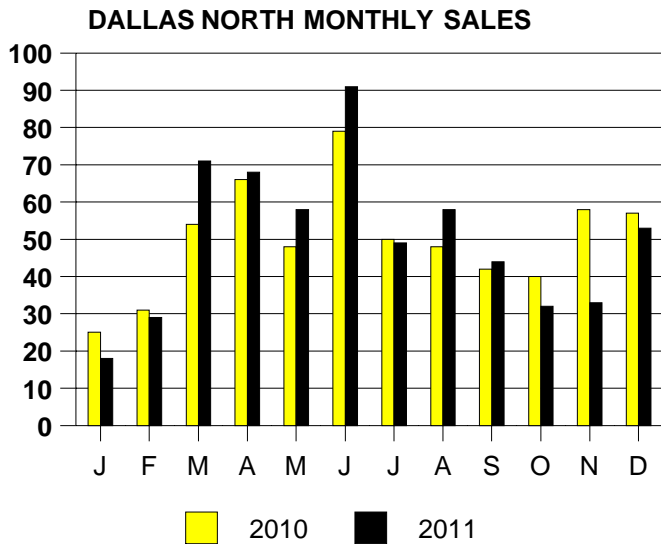


**SALE/LIST PRICE RATIO**

0K-100K	87.2%
101K-150K	94.4%
151K-200K	94.4%
201K-300K	92.9%
301K-500K	94.2%
501K-750K	95.0%
751K+	95.4%

**AVERAGE OVERPRICING**  
Original List Price to Sale Price

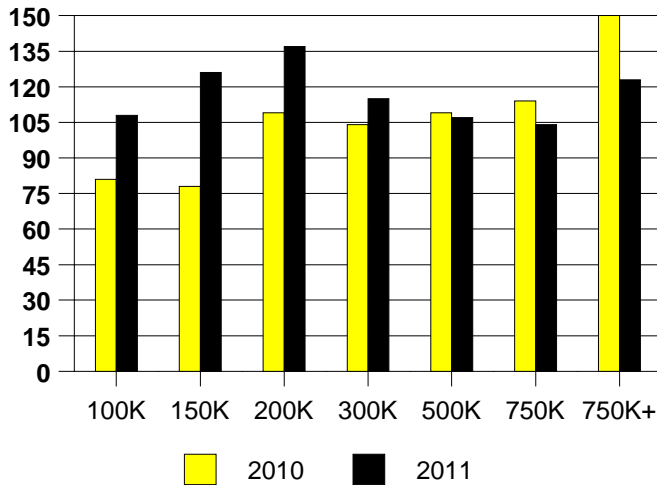
2010	15.3%
2011	14.9%



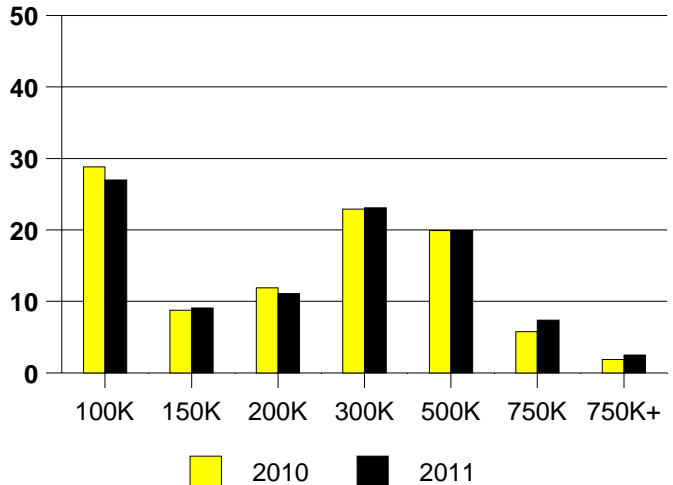
NTREIS Sold informaton as of 01/03/2012

	<u>2010</u>	<u>2011</u>
Total Sold Volume	\$ 419,070,275	\$ 441,591,089
Number of Sales	1775	1753
Median Sale Price	\$ 204,000	\$ 215,000

DAYS ON THE MARKET (DALLAS EAST)



DALLAS EAST MKT SHARE BY PRICE RANGE



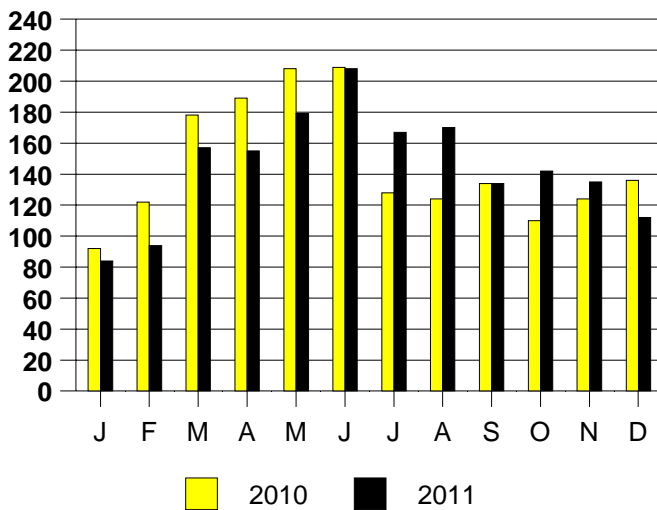
SALE/LIST PRICE RATIO

0K-100K	93.1%
101K-150K	94.8%
151K-200K	95.5%
201K-300K	96.0%
301K-500K	95.8%
501K-750K	95.8%
751K+	96.3%

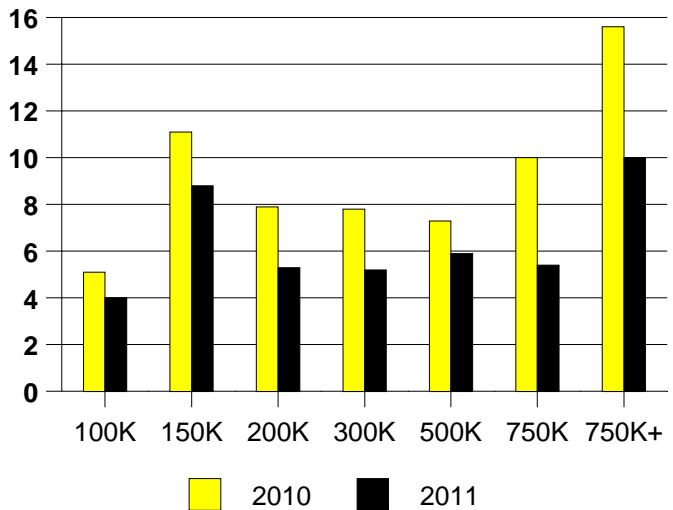
AVERAGE OVERPRICING  
Original List Price to Sale Price

2010	11.4%
2011	13.8%

DALLAS EAST MONTHLY SALES



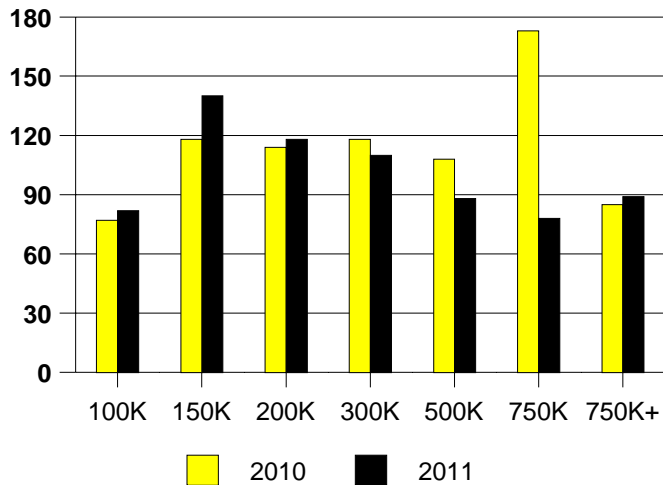
Inventory not shown where no sales  
DALLAS EAST MONTHS OF INVENTORY



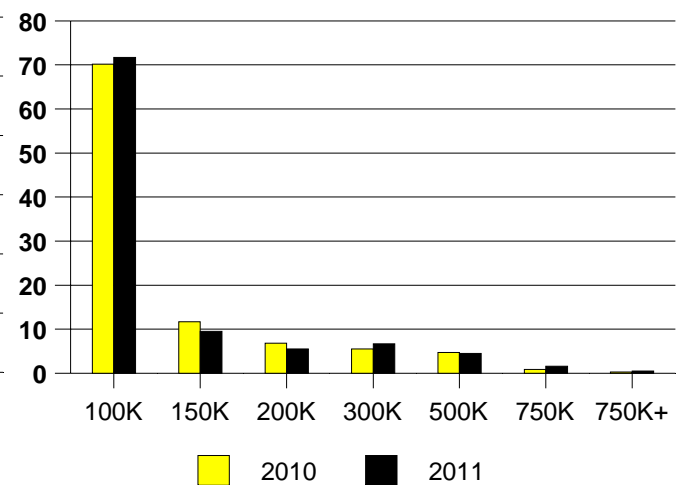
NTREIS Sold informaton as of 01/03/2012

	<u>2010</u>	<u>2011</u>
Total Sold Volume	\$ 101,509,252	\$ 91,265,866
Number of Sales	1021	867
Median Sale Price	\$ 65,000	\$ 62,599

**DAYS ON THE MARKET (AREA 14)**



**AREA 14 MKT SHARE BY PRICE RANGE**



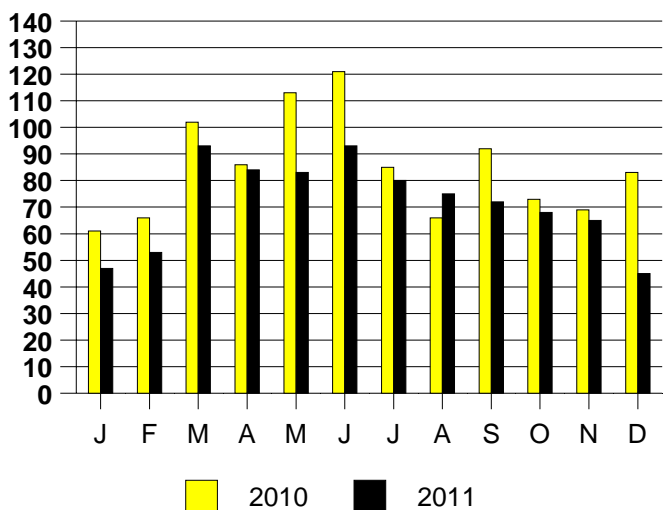
**SALE/LIST PRICE RATIO**

0K-100K	96.1%
101K-150K	94.5%
151K-200K	96.3%
201K-300K	95.6%
301K-500K	96.9%
501K-750K	93.0%
751K+	93.5%

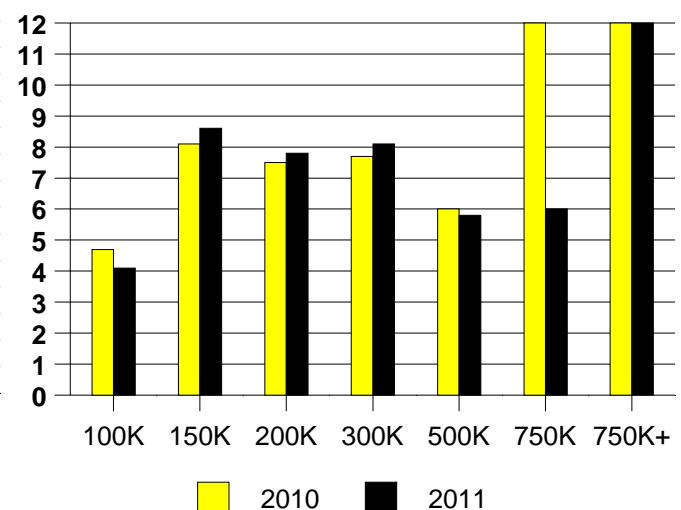
**AVERAGE OVERPRICING**  
Original List Price to Sale Price

2010	13.4%
2011	15.3%

**AREA 14 MONTHLY SALES**



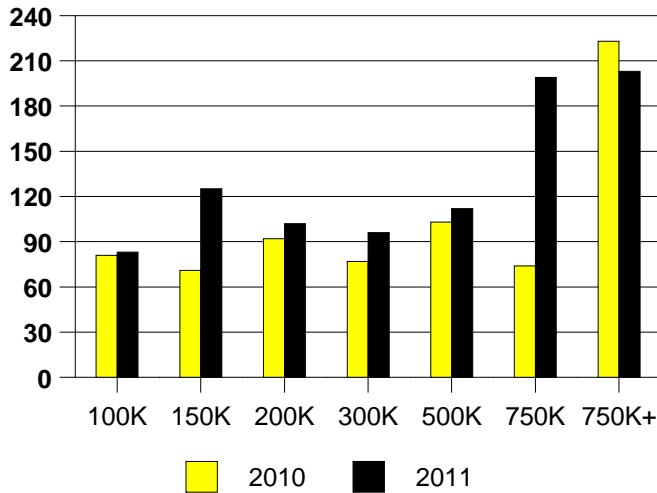
Inventory not shown where no sales  
**AREA 14 MONTHS OF INVENTORY**



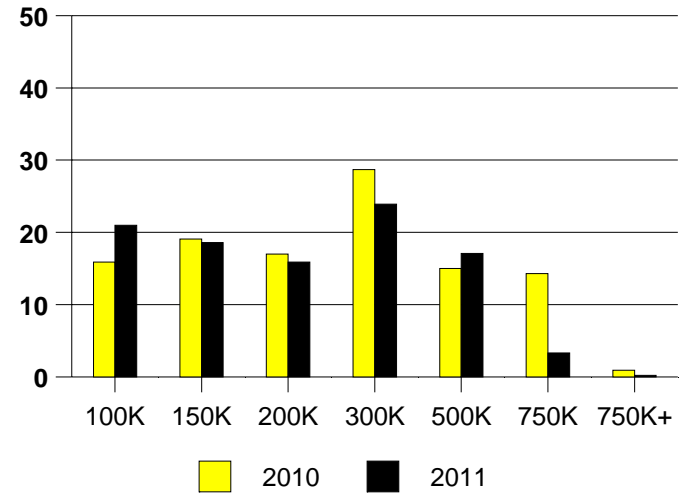
NTREIS Sold informaton as of 01/03/2012

	2010	2011
Total Sold Volume	\$ 101,183,168	\$ 103,021,899
Number of Sales	460	490
Median Sale Price	\$ 197,250	\$ 185,000

DAYS ON THE MARKET (AREA 16)



% MARKET SHARE BY PRICE RANGE(AREA 16)



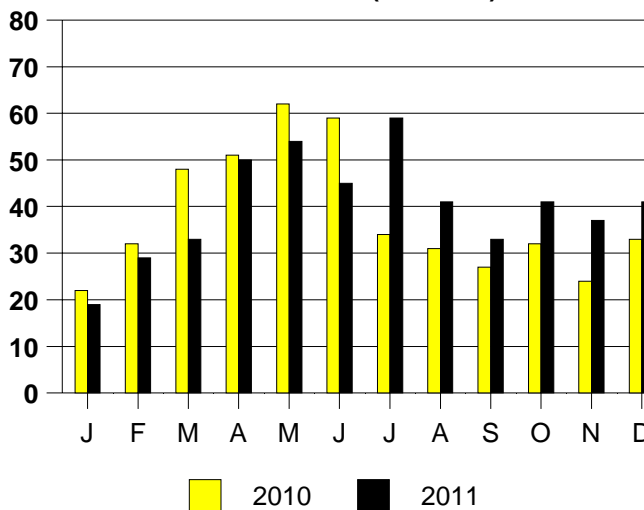
SALE/LIST PRICE RATIO

0K-100K	95.9%
101K-150K	94.0%
151K-200K	94.7%
201K-300K	95.4%
301K-500K	95.6%
501K-750K	94.9%
751K+	94.5%

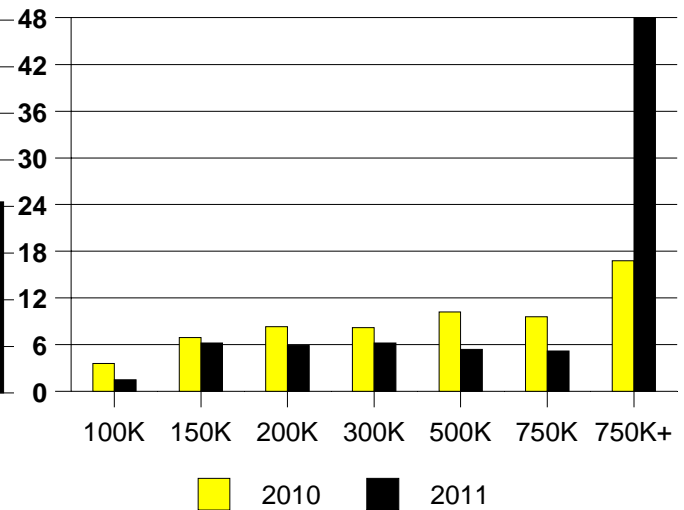
AVERAGE OVERPRICING  
Original List Price to Sale Price

2010	11.5%
2011	12.7%

MONTHLY SALES (AREA 16)



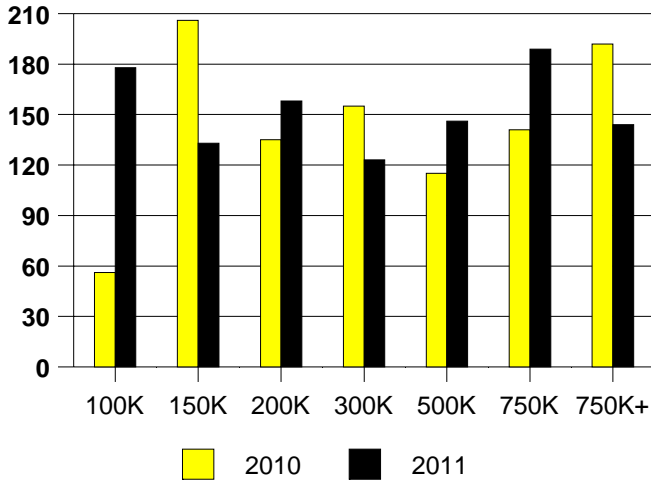
Inventory not shown where no sales  
MONTHS OF INVENTORY(AREA 16)



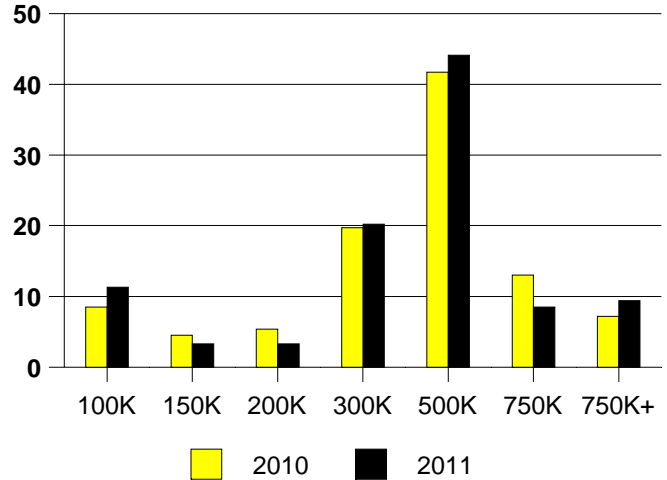
NTREIS Sold informaton as of 01/03/2012

	<u>2010</u>	<u>2011</u>
Total Sold Volume	\$ 90,784,657	\$ 92,242,805
Number of Sales	223	213
Median Sale Price	\$ 330,000	\$ 332,500

DAYS ON THE MARKET (DALLAS OAK LAWN)



DALLAS NE MKT SHARE BY PRICE RANGE



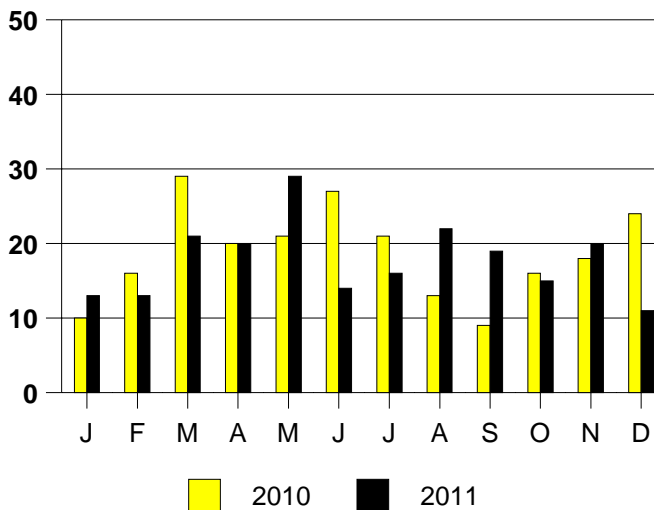
SALE/LIST PRICE RATIO

0K-100K	91.0%
101K-150K	97.3%
151K-200K	91.5%
201K-300K	96.9%
301K-500K	95.6%
501K-750K	96.1%
751K+	94.4%

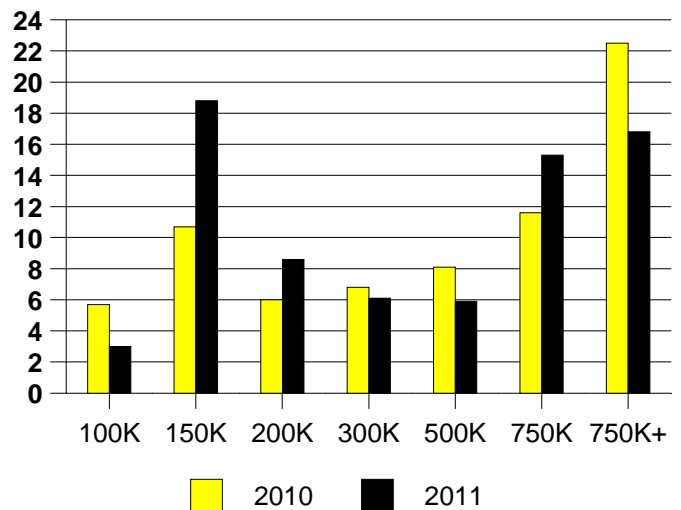
AVERAGE OVERPRICING  
Original List Price to Sale Price

2010	11.3%
2011	11.7%

DALLAS OAKLAWN MONTHLY SALES



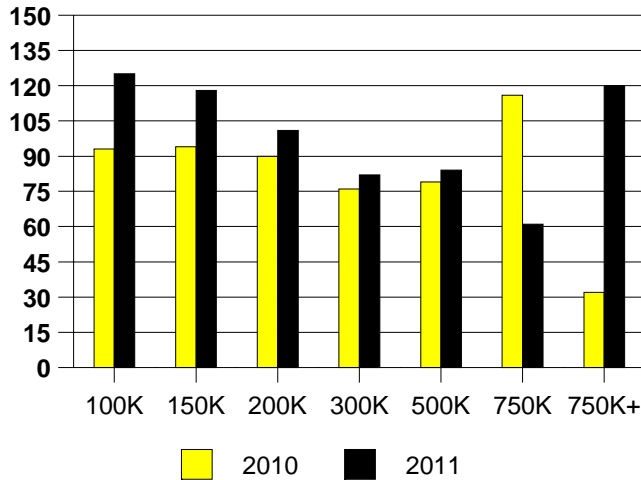
DALLAS OAKLAWN MONTHS OF INVENTORY



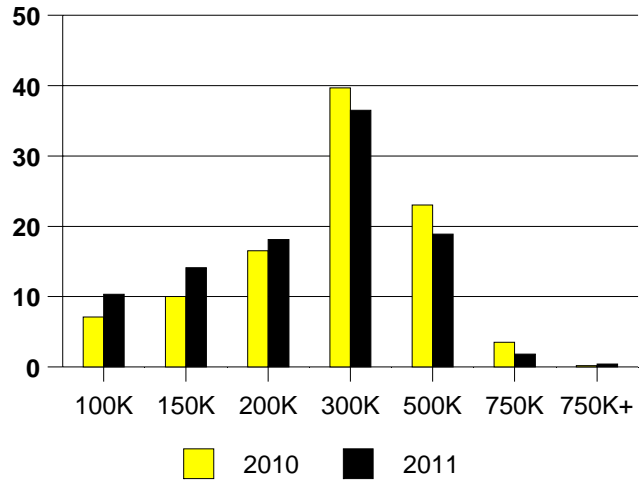
NTREIS Sold informaton as of 01/03/2012

	<u>2010</u>	<u>2011</u>
Total Sold Volume	\$ 129,681,110	\$ 129,580,539
Number of Sales	508	562
Median Sale Price	\$ 243,000	\$ 220,000

**DAYS ON THE MARKET (AREA 18)**



**MKT SHARE BY PRICE RANGE(AREA 18)**



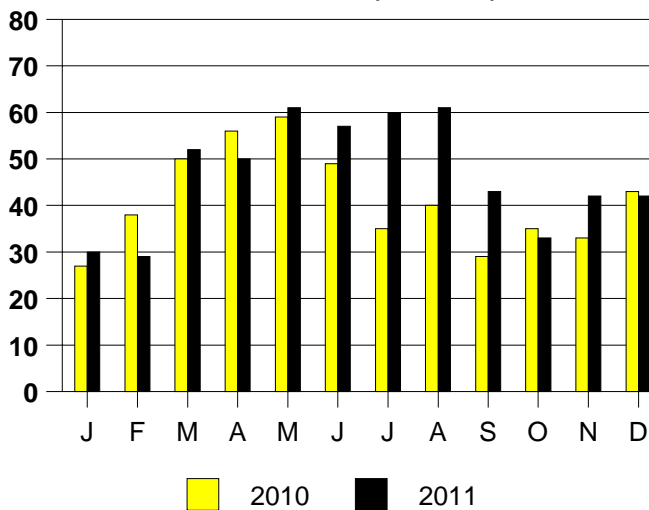
**SALE/LIST PRICE RATIO**

0K-100K	91.8%
101K-150K	93.1%
151K-200K	95.6%
201K-300K	96.5%
301K-500K	96.1%
501K-750K	97.0%
751K+	102.7%

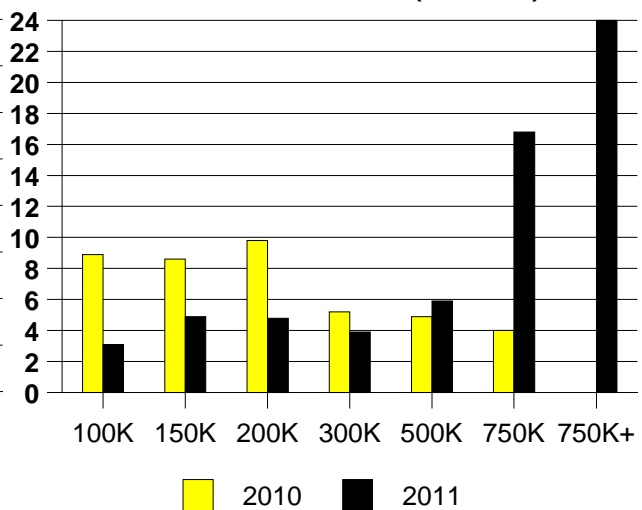
**AVERAGE OVERPRICING**  
Original List Price to Sale Price

2010	8.3%
2011	11.0%

**MONTHLY SALES (AREA 18)**



**Inventory not shown where no sales**  
**MONTHS OF INVENTORY (AREA 18)**

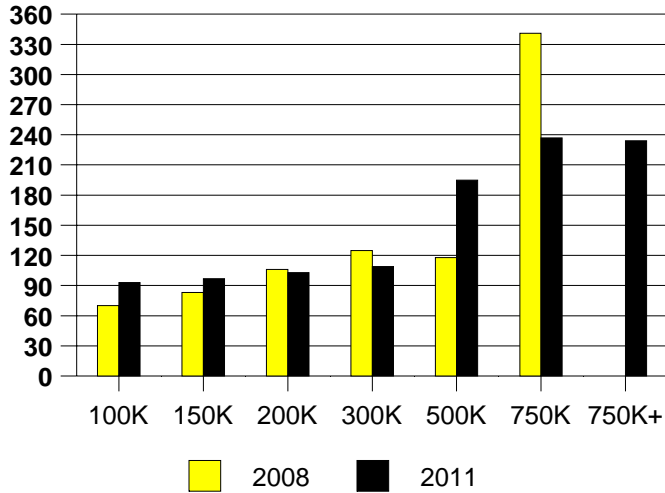


NTREIS Sold informaton as of 01/03/2012

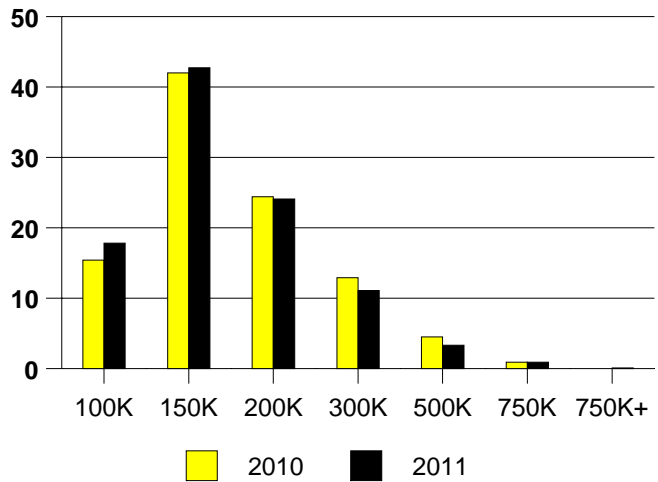


	<u>2010</u>	<u>2011</u>
Total Sold Volume	\$ 159,806,567	\$ 149,002,324
Number of Sales	1008	972
Median Sale Price	\$ 141,250	\$ 138,000

DAYS ON THE MARKET (DENTON)



DENTON MARKET SHARE BY PRICE RANGE



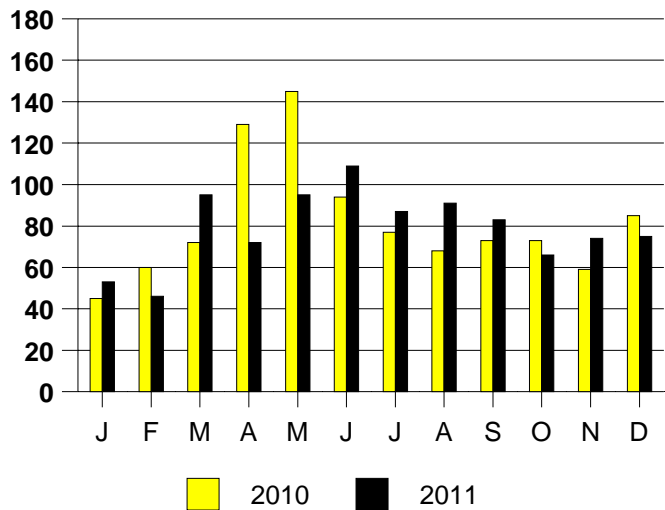
SALE/LIST PRICE RATIO

0K-100K	94.0%
101K-150K	97.2%
151K-200K	97.3%
201K-300K	96.7%
301K-500K	94.4%
501K-750K	96.4%
751K+	93.0%

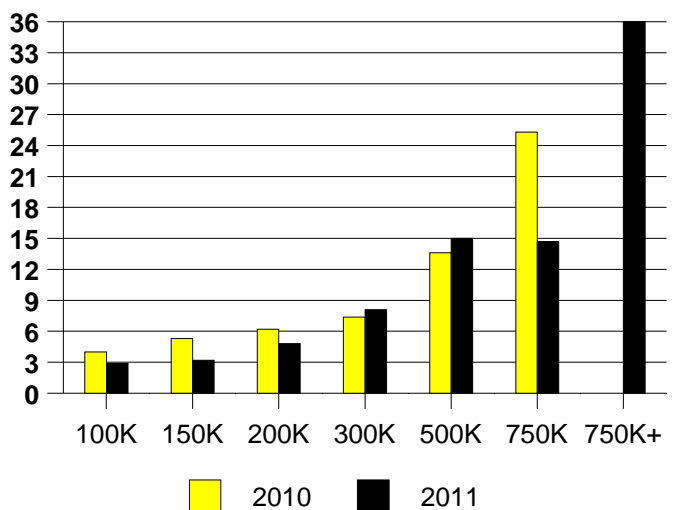
AVERAGE OVERPRICING  
Original List Price to Sale Price

2010	6.4%
2011	8.2%

DENTON MONTHLY SALES



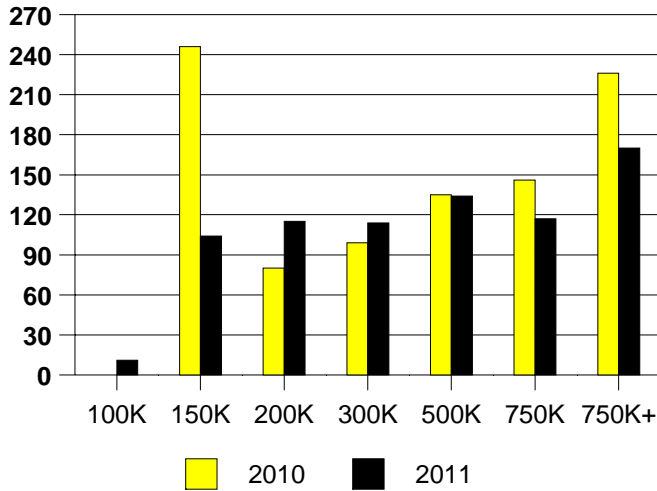
Inventory not shown where no sales  
DENTON MONTHS OF INVENTORY



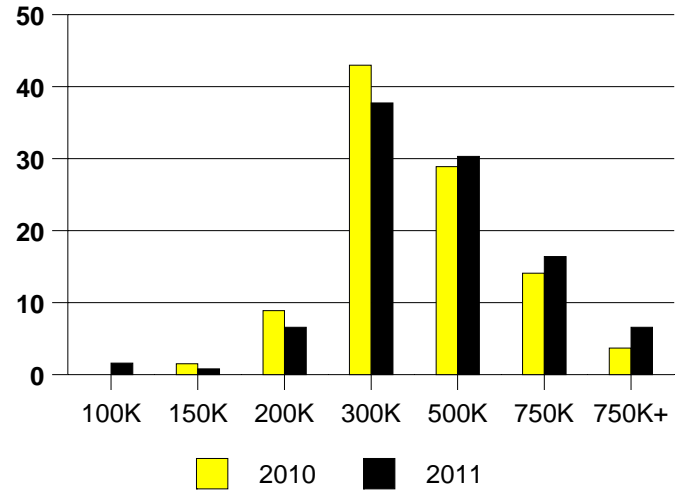
NTREIS Sold informaton as of 01/03/2012

	<u>2010</u>	<u>2011</u>
Total Sold Volume	\$ 47,141,080	\$ 47,859,880
Number of Sales	135	122
Median Sale Price	\$ 295,000	\$ 315,000

**DAYS ON THE MARKET (FAIRVIEW)**



**FAIRVIEW MKT SHARE BY PRICE RANGE**



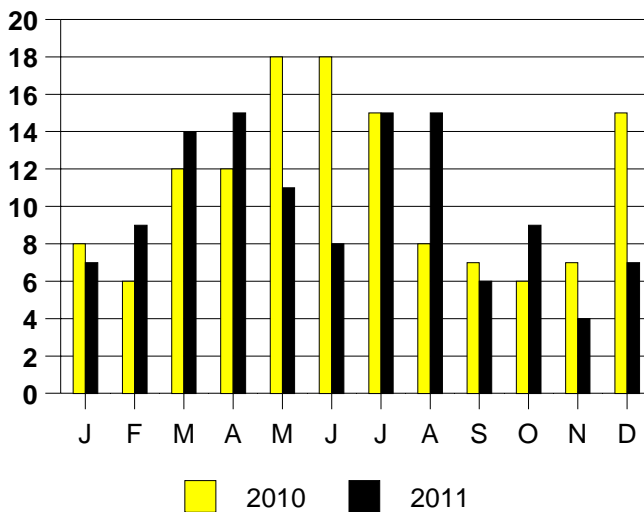
**SALE/LIST PRICE RATIO**

0K-100K	106.6%
101K-150K	102.9%
151K-200K	100.2%
201K-300K	96.6%
301K-500K	96.3%
501K-750K	96.2%
751K+	96.1%

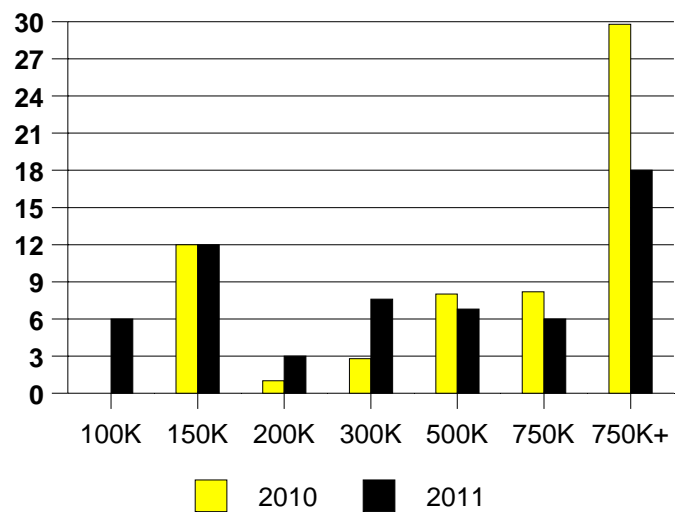
**AVERAGE OVERPRICING**  
Original List Price to Sale Price

2010	8.4%
2011	7.9%

**FAIRVIEW MONTHLY SALES**



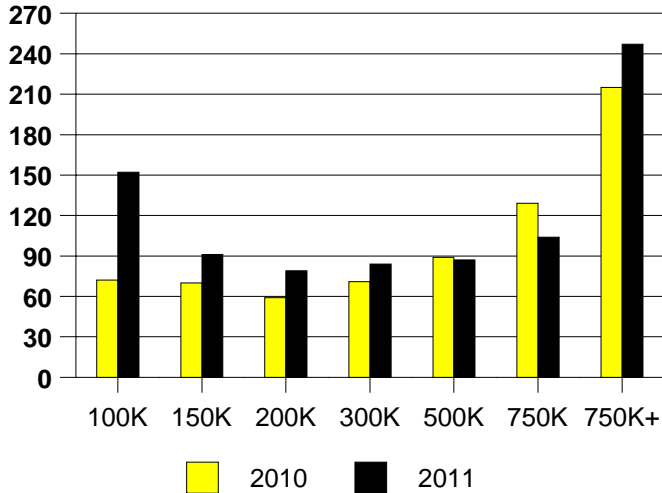
Inventory not shown where no sales  
**FAIRVIEW MONTHS OF INVENTORY**



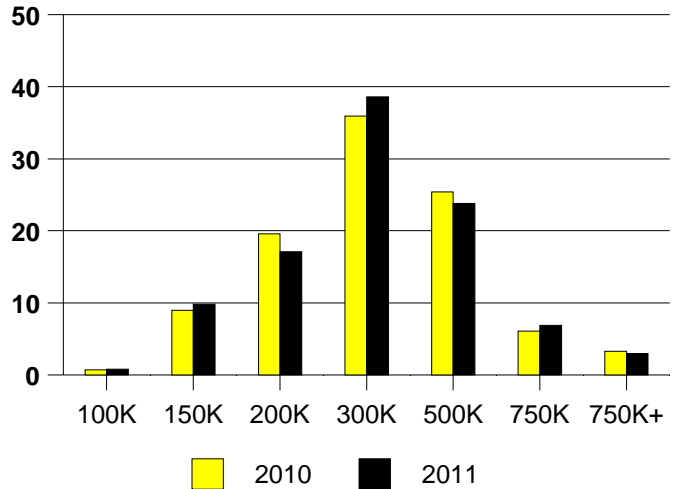
NTREIS Sold informaton as of 01/03/2012

	<u>2010</u>	<u>2011</u>
Total Sold Volume	\$ 284,316,902	\$ 286,047,161
Number of Sales	937	943
Median Sale Price	\$ 260,000	\$ 258,000

**DAYS ON THE MARKET (FLOWER MOUND)**



**FLOWER MOUND MKT SHARE BY PRICE**



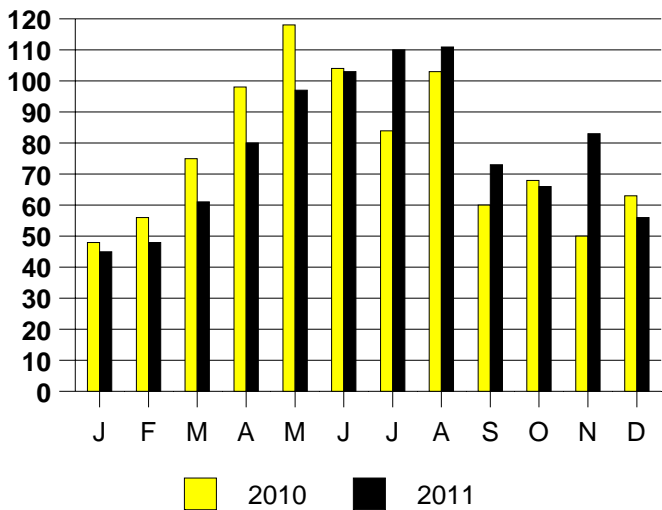
**SALE/LIST PRICE RATIO**

0K-100K	87.3%
101K-150K	96.9%
151K-200K	97.6%
201K-300K	97.6%
301K-500K	97.3%
501K-750K	96.8%
751K+	94.9%

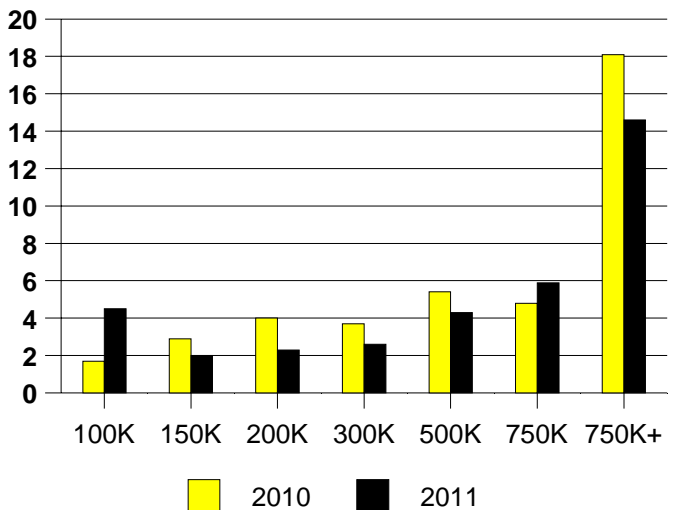
**AVERAGE OVERPRICING**  
Original List Price to Sale Price

2010	5.7%
2011	6.6%

**FLOWER MOUND MONTHLY SALES**



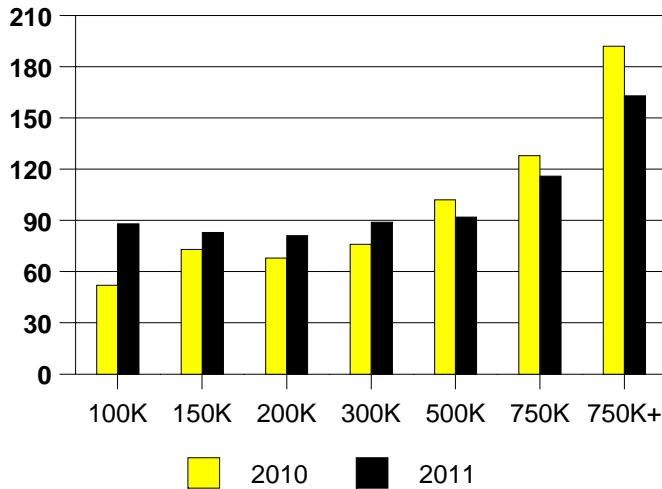
**FLOWER MOUND MONTHS OF INVENTORY**



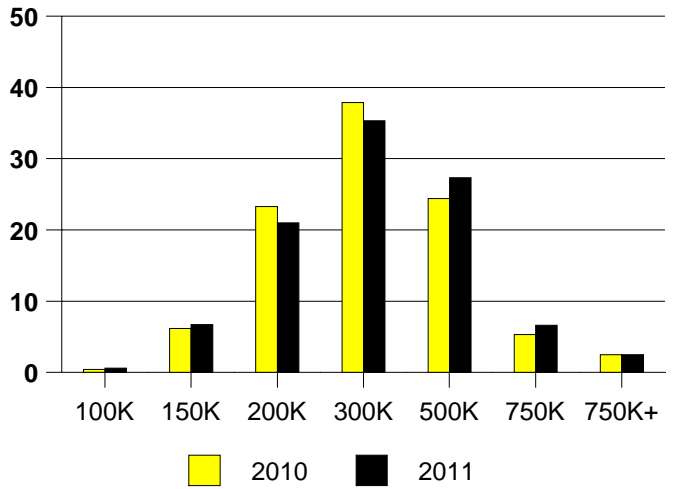
NTREIS Sold informaton as of 01/03/2012

	<u>2010</u>	<u>2011</u>
Total Sold Volume	\$ 668,686,541	\$ 703,658,910
Number of Sales	2283	2320
Median Sale Price	\$ 249,500	\$ 264,268

DAYS ON MARKET(FRISCO)



FRISCO MKT SHARE BY PRICE RANGE



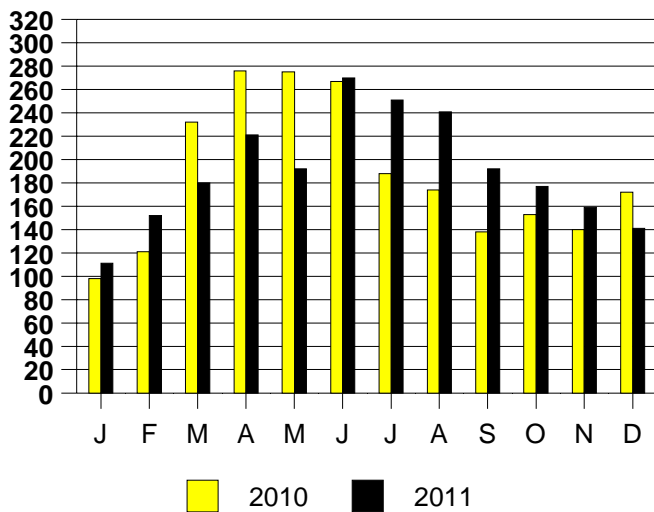
SALE/LIST PRICE RATIO

0K-100K	96.4%
101K-150K	96.6%
151K-200K	97.1%
201K-300K	96.7%
301K-500K	96.1%
501K-750K	95.7%
751K+	95.4%

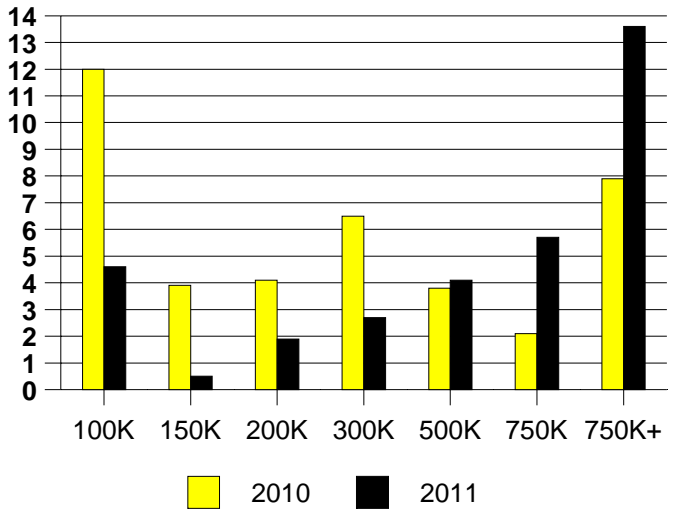
AVERAGE OVERPRICING  
Original List Price to Sale Price

2010	7.1%
2011	7.2%

FRISCO MONTHLY SALES



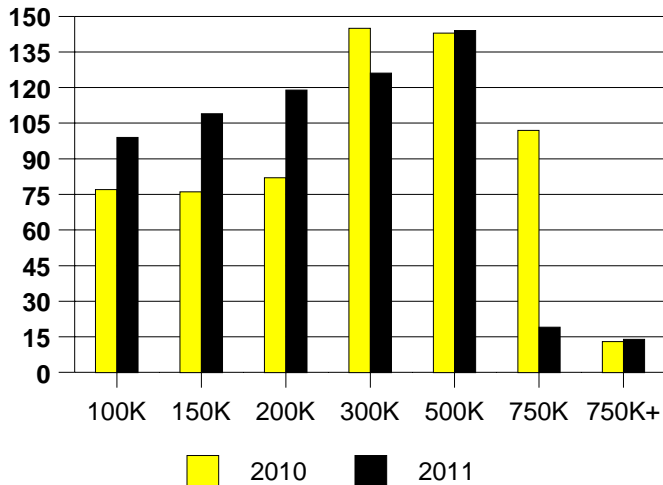
Inventory not shown where no sales  
FRISCO MONTHS OF INVENTORY



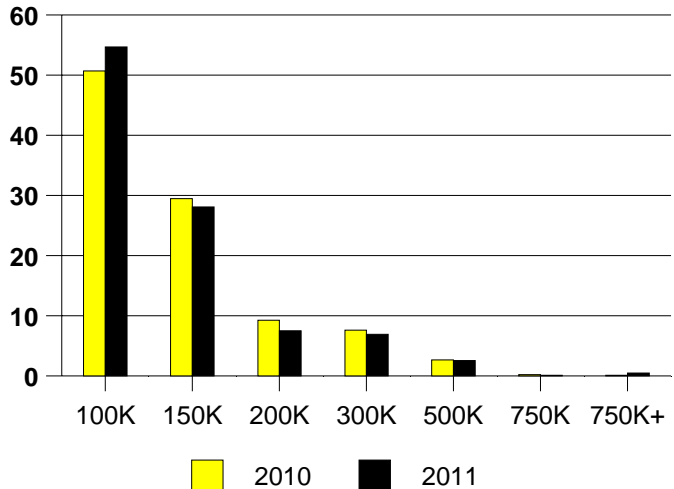
NTREIS Sold informaton as of 01/03/2012

	<u>2010</u>	<u>2011</u>
Total Sold Volume	\$ 211,331,206	\$ 189,611,940
Number of Sales	1794	1699
Median Sale Price	\$ 100,000	\$ 95,000

**DAYS ON THE MARKET (GARLAND)**



**GARLAND MKT SHARE BY PRICE RANGE**



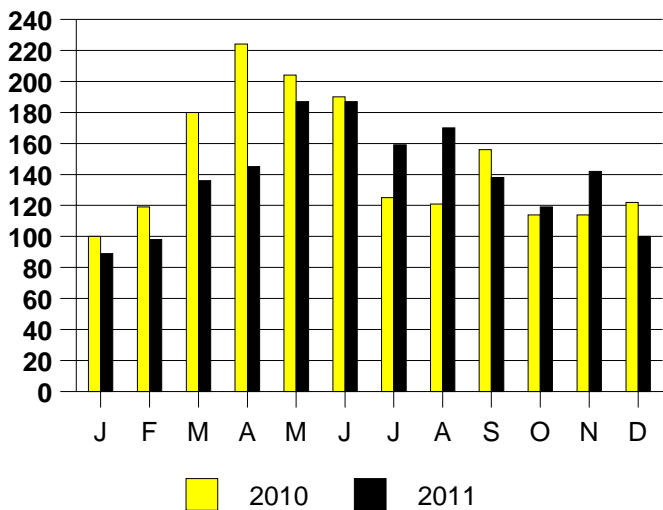
**SALE/LIST PRICE RATIO**

0K-100K	95.6%
101K-150K	97.1%
151K-200K	96.8%
201K-300K	96.4%
301K-500K	96.0%
501K-750K	96.0%
751K+	90.6%

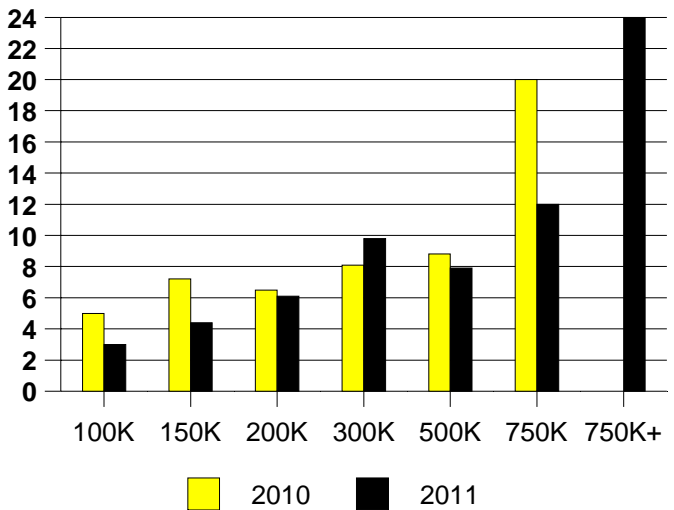
**AVERAGE OVERPRICING**  
Original List Price to Sale Price

2010	10.0%
2011	12.4%

**GARLAND MONTHLY SALES**

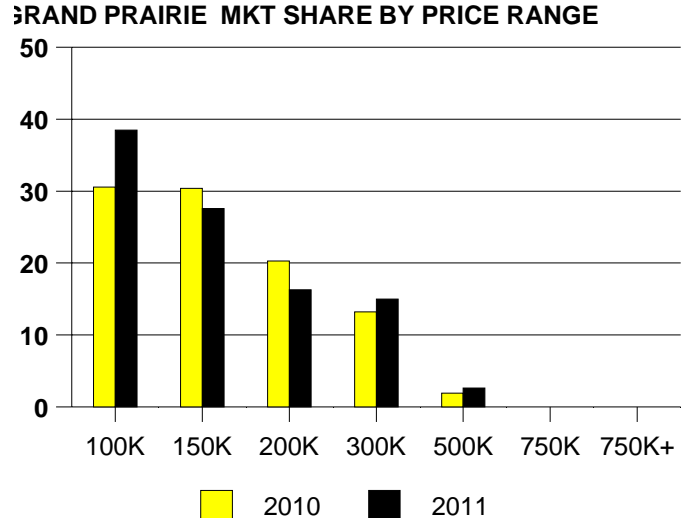
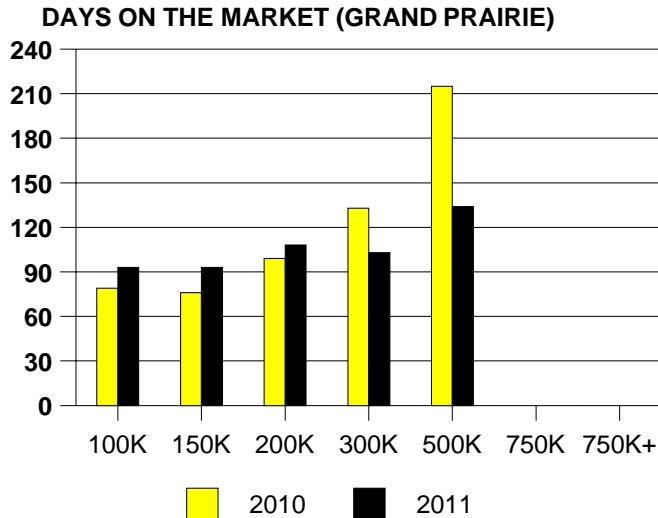


Inventory not shown where no sales  
**GARLAND MONTHS OF INVENTORY**



NTREIS Sold informaton as of 01/03/2012

	<u>2010</u>	<u>2011</u>
Total Sold Volume	\$ 186,918,025	\$ 174,308,807
Number of Sales	1387	1316
Median Sale Price	\$ 125,500	\$ 121,500



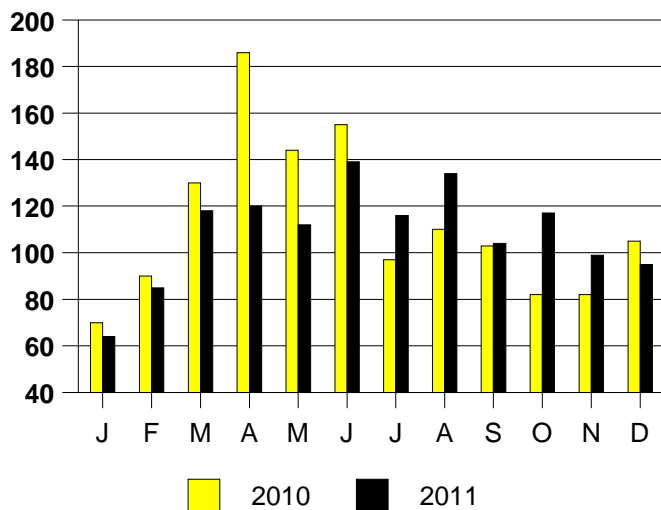
**SALE/LIST PRICE RATIO**

0K-100K	96.6%
101K-150K	97.3%
151K-200K	97.7%
201K-300K	96.3%
301K-500K	93.6%
501K-750K	NONE
751K+	NONE

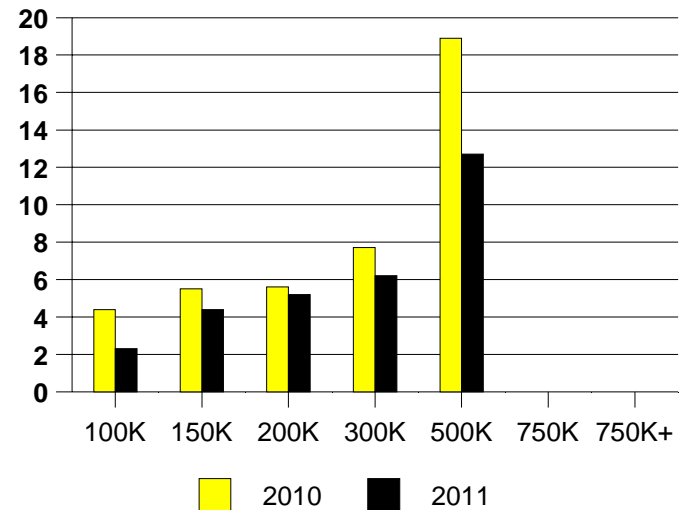
**AVERAGE OVERPRICING**  
Original List Price to Sale Price

2010	8.7%
2011	10.1%

**GRAND PRAIRIE MONTHLY SALES**



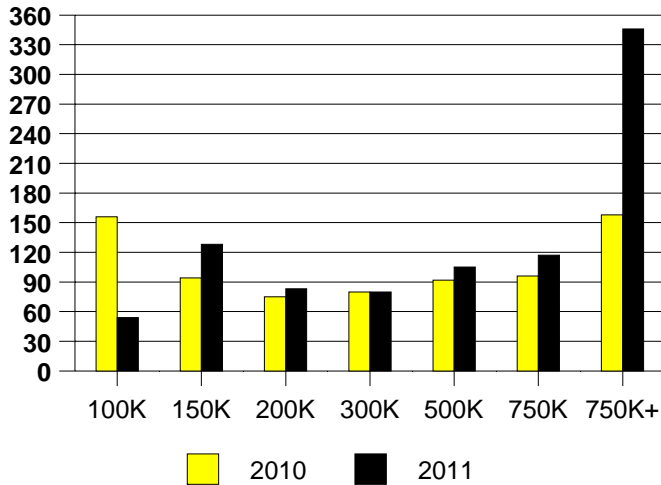
**GRAND PRAIRIE MONTHS OF INVENTORY**



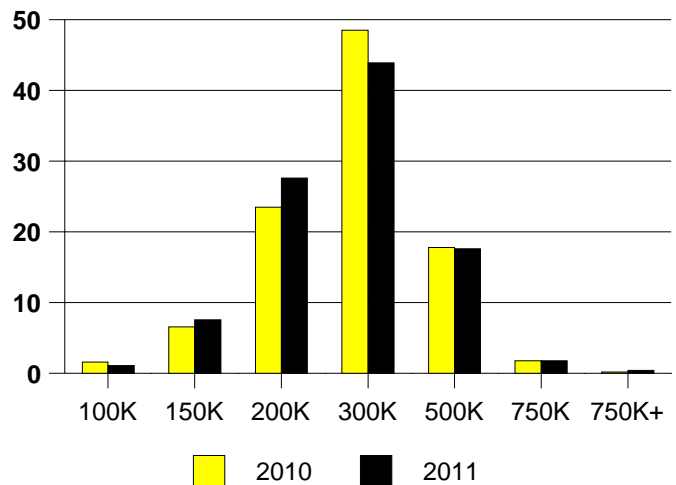
NTREIS Sold informaton as of 01/03/2012

	<u>2010</u>	<u>2011</u>
Total Sold Volume	\$ 110,279,362	\$ 112,030,764
Number of Sales	439	449
Median Sale Price	\$ 237,500	\$ 229,000

**DAYS ON THE MARKET (GRAPEVINE)**



**GRAPEVINE MKT SHARE BY PRICE RANGE**



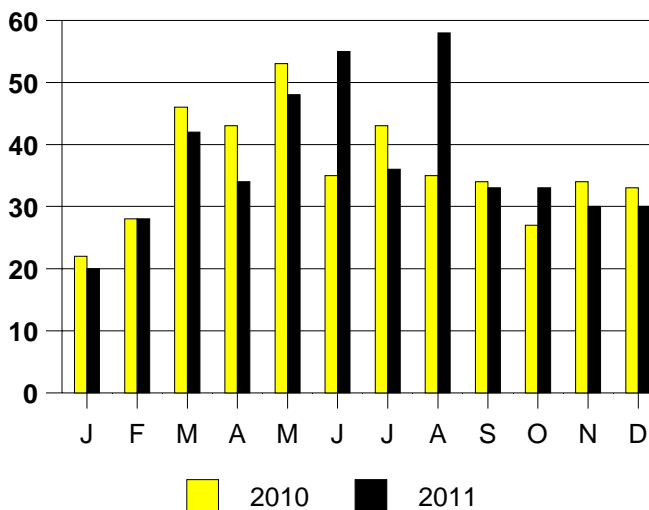
**SALE/LIST PRICE RATIO**

0K-100K	86.0%
101K-150K	96.7%
151K-200K	97.5%
201K-300K	97.2%
301K-500K	96.9%
501K-750K	95.4%
751K+	93.8%

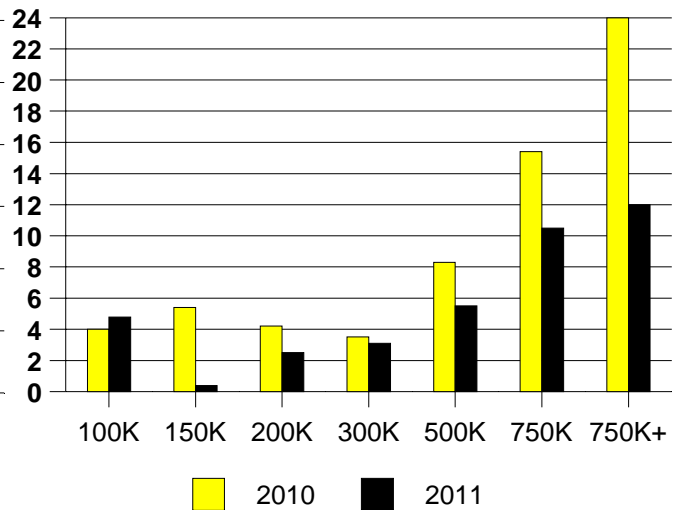
**AVERAGE OVERPRICING**  
Original List Price to Sale Price

2010	7.7%
2011	6.7%

**GRAPEVINE MONTHLY SALES**



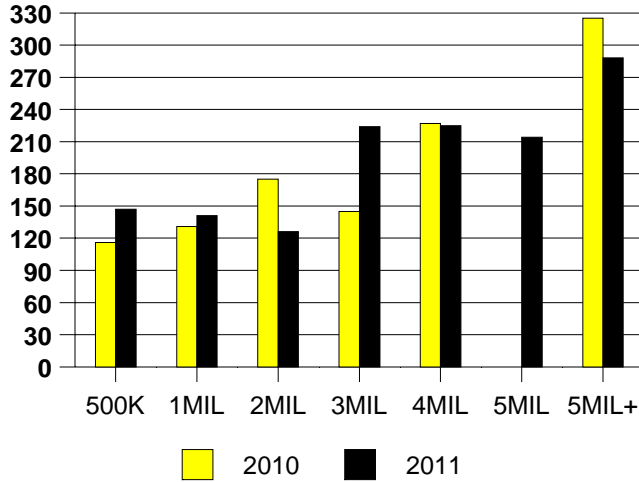
Inventory not shown where no sales  
**GRAPEVINE MONTHS OF INVENTORY**



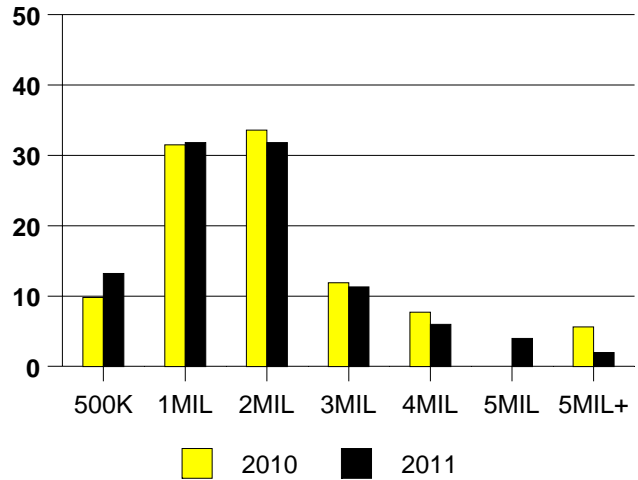
NTREIS Sold informaton as of 01/03/2012

	<u>2010</u>	<u>2011</u>
Total Sold Volume	\$ 246,031,673	\$ 236,060,974
Number of Sales	143	151
Median Sale Price	\$ 1,120,000	\$ 1,125,000

**DAYS ON THE MARKET (HP)**



**MKT SHARE BY PRICE RANGE (HP)**



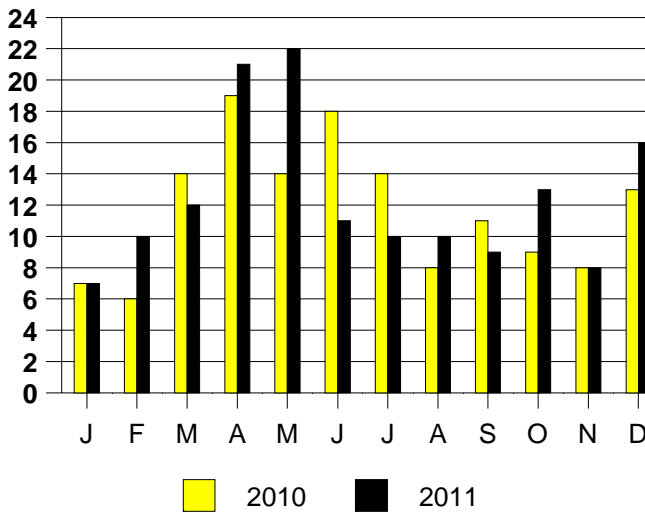
**SALE/LIST PRICE RATIO**

0K-500K	94.9%
501K-1MIL	96.5%
1MIL-2MIL	95.6%
2MIL-3MIL	93.7%
3MIL-4MIL	98.2%
4MIL-5MIL	95.4%
5MIL+	100.0%

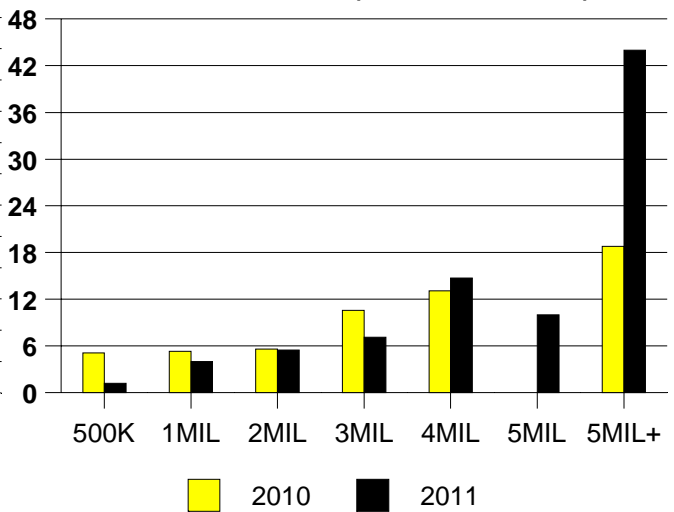
**AVERAGE OVERPRICING**

Orig List Price to Sale Price	
2010	15.3%
2011	12.2%

**HIGHLAND PARK MONTHLY SALES**



**MONTHS OF INVENTORY (HIGHLAND PARK)**  
Inventory not shown where no sales

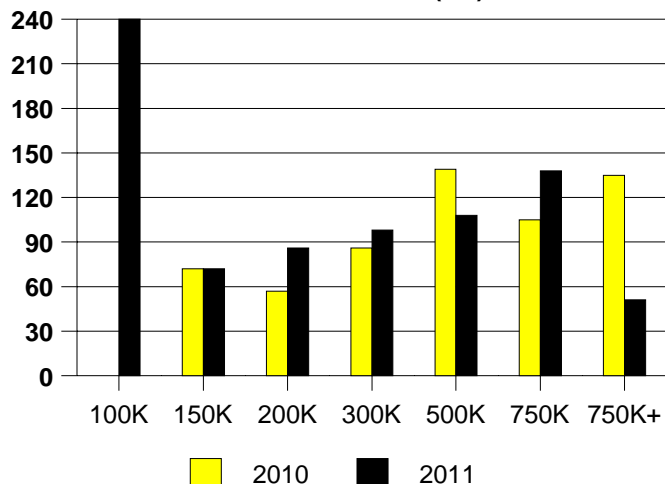


NTREIS Sold information as of 01/03/2012

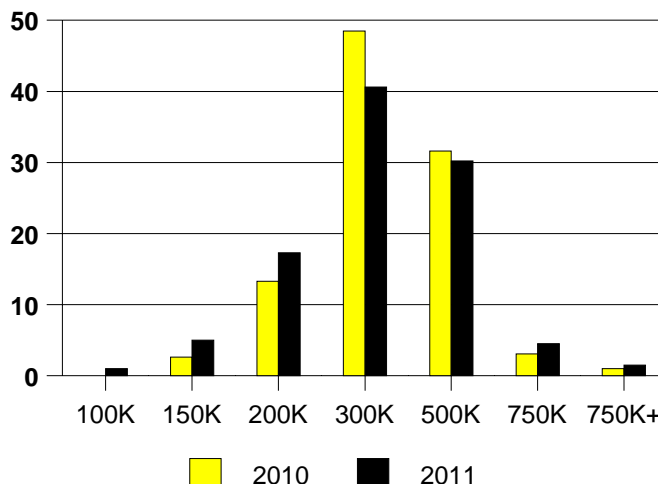


	<u>2010</u>	<u>2011</u>
Total Sold Volume	\$58,272,191	\$ 59,641,834
Number of Sales	196	202
Median Sale Price	\$ 279,500	\$ 266,000

**DAYS ON THE MARKET(HV)**



**% MARKET SHARE BY PRICE RANGE HV**



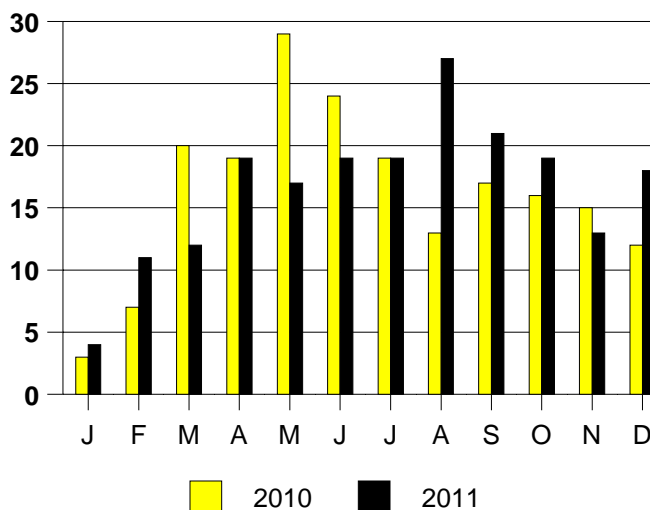
**SALE/LIST PRICE RATIO**

0K-100K	91.5%
101K-150K	97.2%
151K-200K	96.6%
201K-300K	97.3%
301K-500K	97.0%
501K-750K	96.2%
751K+	95.8%

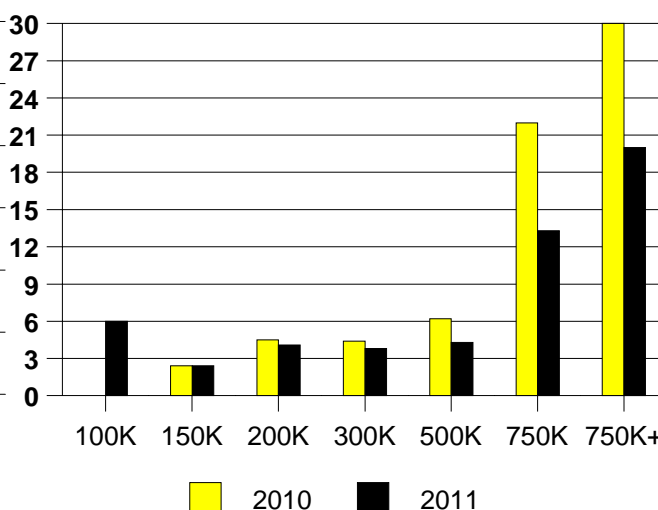
**AVERAGE OVERPRICING**  
Original List Price to Sale Price

2010	6.6%
2011	7.7%

**HIGH VILLAGE MONTHLY SALES**



**HIGHLAND VILLGE MONTHS OF INVENTORY**

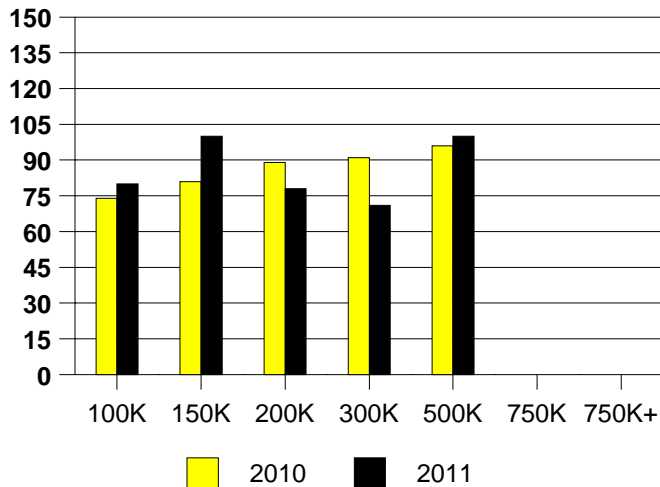


Inventory not shown where no sales

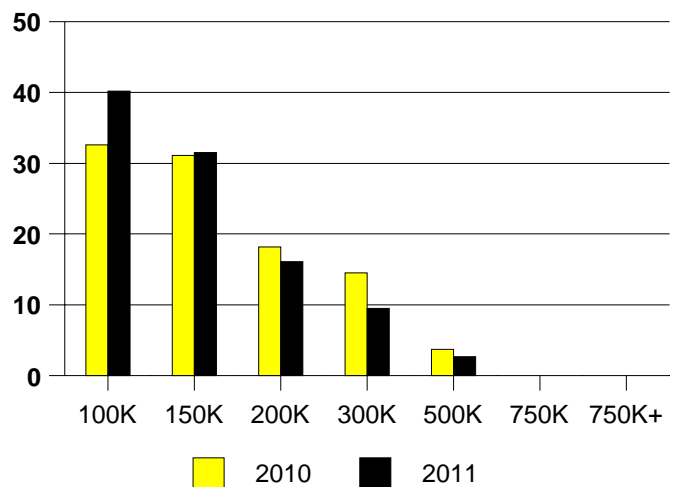
NTREIS Sold informaton as of 01/03/2012

	<u>2010</u>	<u>2011</u>
Total Sold Volume	\$ 45,786,897	\$ 42,068,895
Number of Sales	325	336
Median Sale Price	\$ 128,000	\$ 117,750

**DAYS ON THE MARKET (HURST)**



**HURST MKT SHARE BY PRICE RANGE**



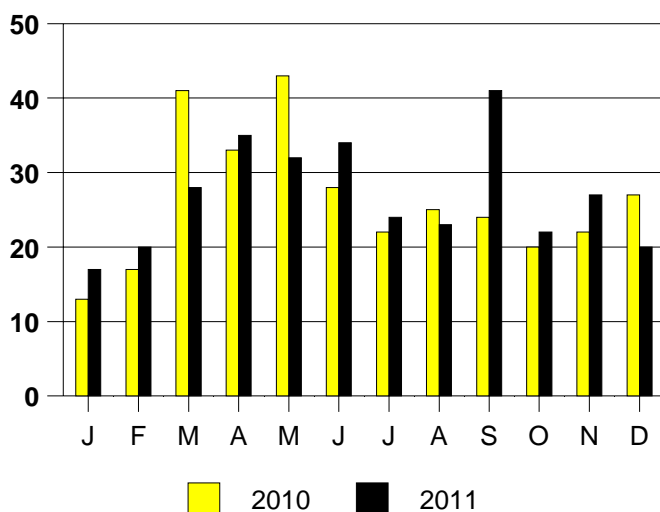
**SALE/LIST PRICE RATIO**

0K-100K	95.5%
101K-150K	97.4%
151K-200K	97.5%
201K-300K	97.5%
301K-500K	95.0%
501K-750K	NONE
751K+	NONE

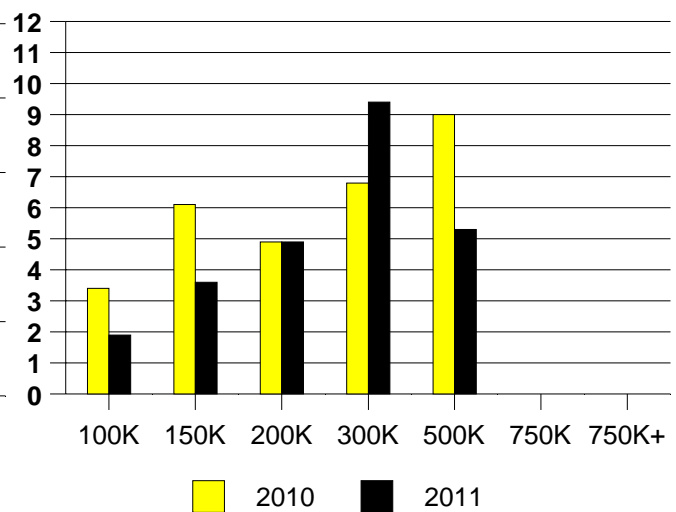
**AVERAGE OVERPRICING**  
Original List Price to Sale Price

2010	8.9%
2011	8.8%

**HURST MONTHLY SALES**



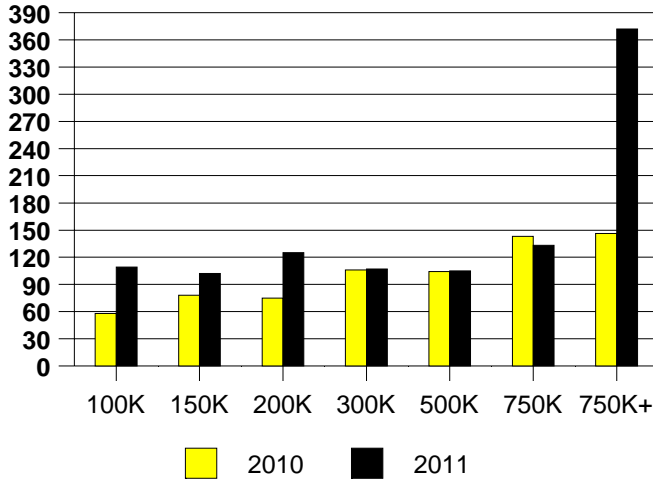
Inventory not shown where no sales  
**HURST MONTHS OF INVENTORY**



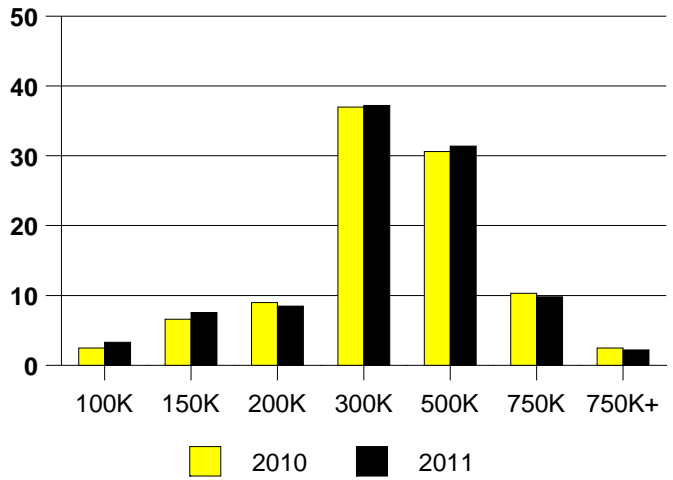
NTREIS Sold informaton as of 01/03/2012

	<u>2010</u>	<u>2011</u>
Total Sold Volume	\$ 207,508,857	\$ 192,188,321
Number of Sales	648	602
Median Sale Price	\$ 282,000	\$ 280,000

**DAYS ON THE MARKET (KELLER)**



**KELLER MKT SHARE BY PRICE RANGE**



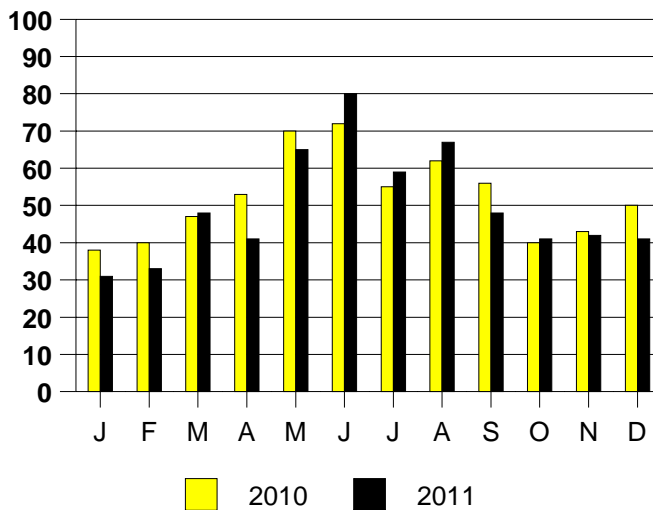
**SALE/LIST PRICE RATIO**

0K-100K	94.9%
101K-150K	97.2%
151K-200K	96.7%
201K-300K	97.0%
301K-500K	96.7%
501K-750K	96.3%
751K+	95.6%

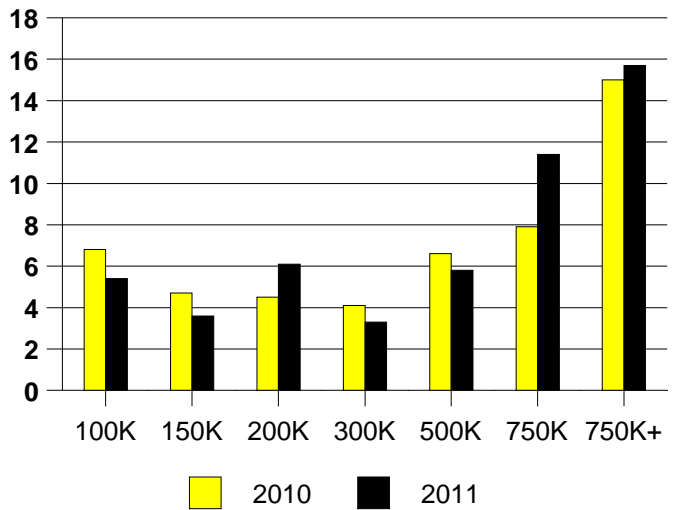
**AVERAGE OVERPRICING**  
Original List Price to Sale Price

2010	6.7%
2011	8.0%

**KELLER MONTHLY SALES**



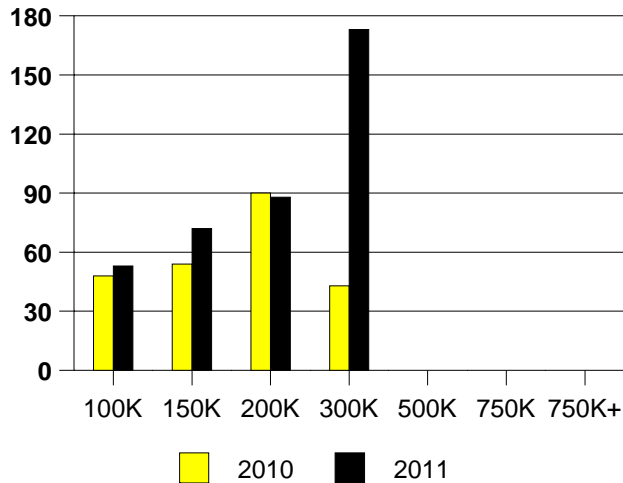
Inventory not shown where no sales  
**KELLER MONTHS OF INVENTORY**



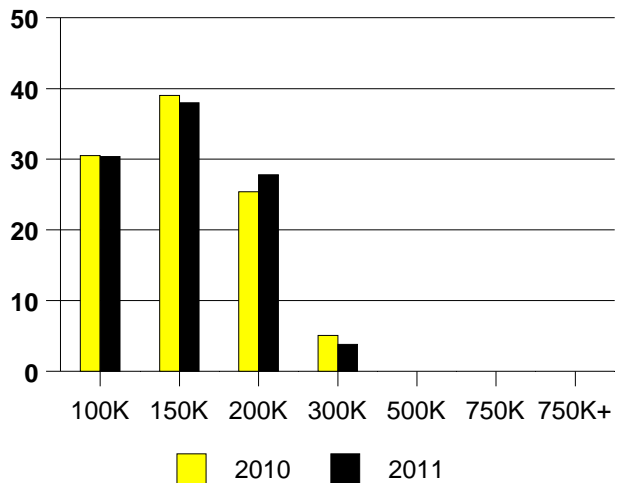
NTREIS Sold informaton as of 01/03/2012

	<u>2010</u>	<u>2011</u>
Total Sold Volume	\$ 7,461,405	\$ 9,635,637
Number of Sales	59	79
Median Sale Price	\$ 134,900	\$ 130,000

**LAKE DALLAS DAYS ON THE MARKET**



**LAKE DALLAS MKT SHARE BY PRICE RANGE**



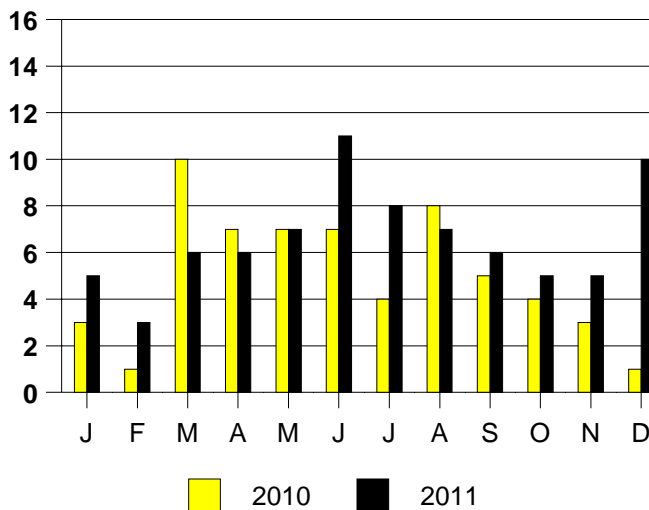
**SALE/LIST PRICE RATIO**

0K-100K	93.3%
101K-150K	98.0%
151K-200K	97.9%
201K-300K	98.1%
301K-500K	NONE
501K-750K	NONE
751K+	NONE

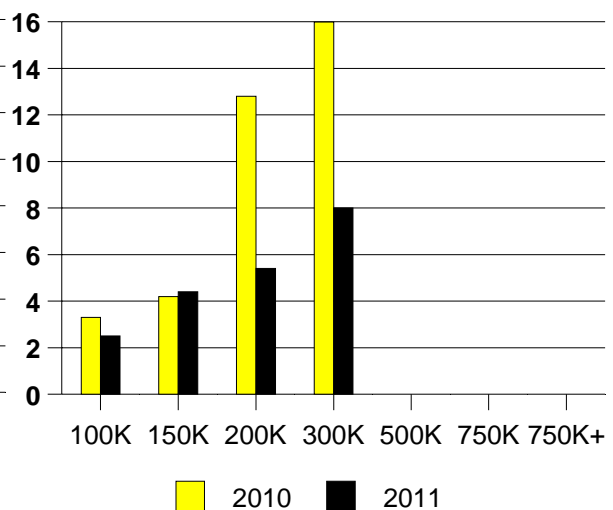
**AVERAGE OVERPRICING**  
Original List Price to Sale Price

2010	5.3%
2011	8.8%

**LAKE DALLAS MONTHLY SALES**



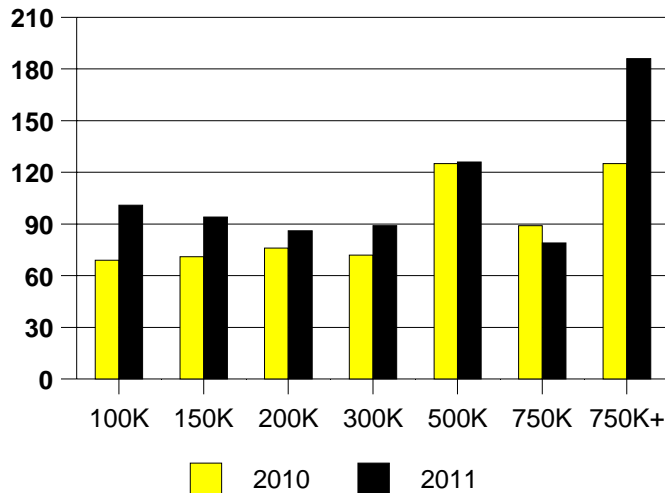
**LAKE DALLAS MONTHS OF INVENTORY**



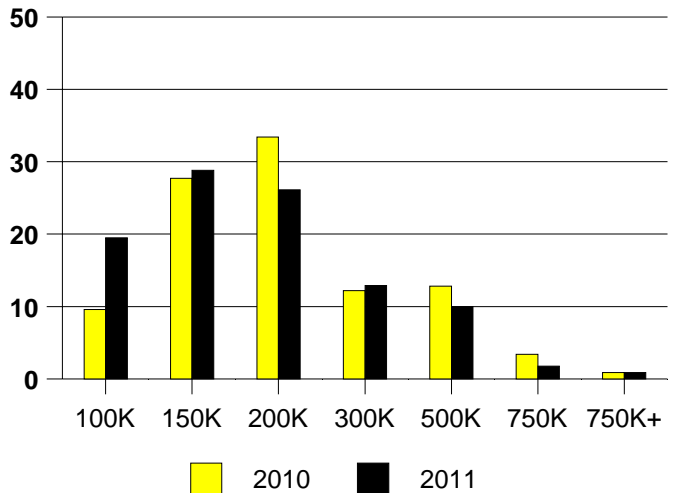
NTREIS Sold informaton as of 01/03/2012

	<u>2010</u>	<u>2011</u>
Total Sold Volume	\$ 184,670,276	\$ 170,371,455
Number of Sales	877	923
Median Sale Price	\$ 168,000	\$ 154,000

**DAYS ON THE MARKET (LEWISVILLE)**



**LEWISVILLE MKT SHARE BY PRICE RANGE**



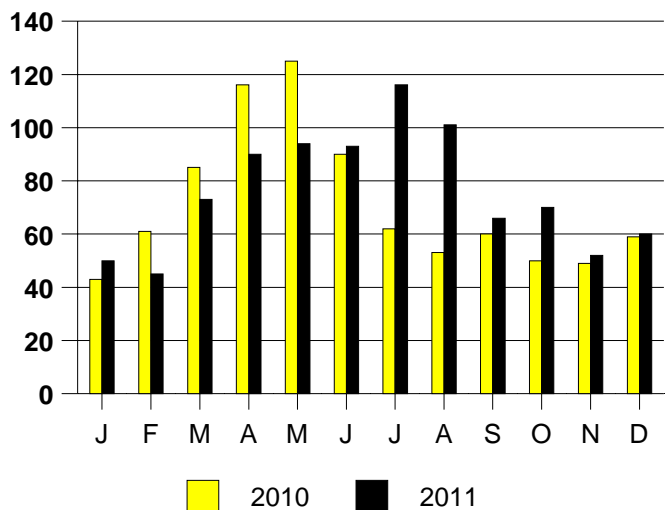
**SALE/LIST PRICE RATIO**

0K-100K	94.3%
101K-150K	97.7%
151K-200K	97.9%
201K-300K	95.7%
301K-500K	94.6%
501K-750K	96.9%
751K+	101.1%

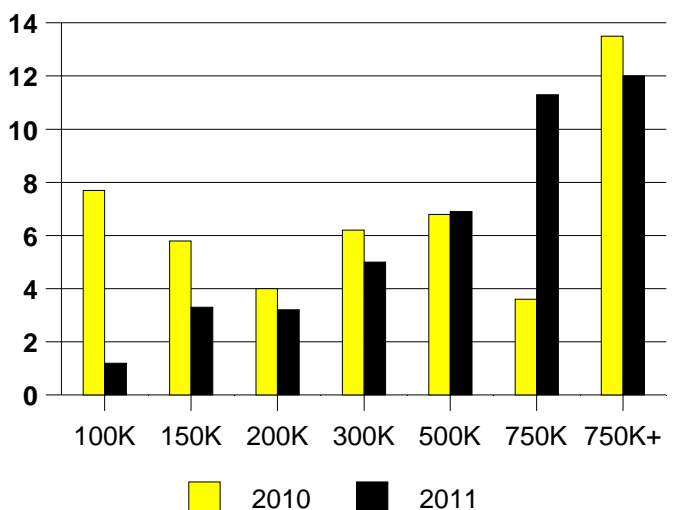
**AVERAGE OVERPRICING**  
Original List Price to Sale Price

2010	6.6%
2011	8.5%

**LEWISVILLE MONTHLY SALES**



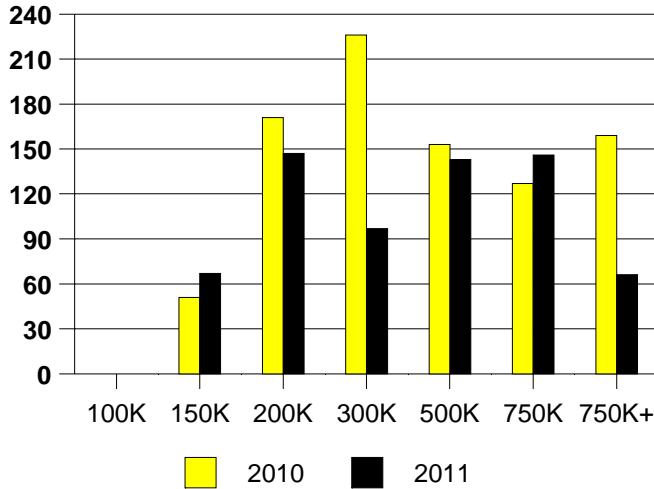
Inventory not shown where no sales  
**LEWISVILLE MONTHS OF INVENTORY**



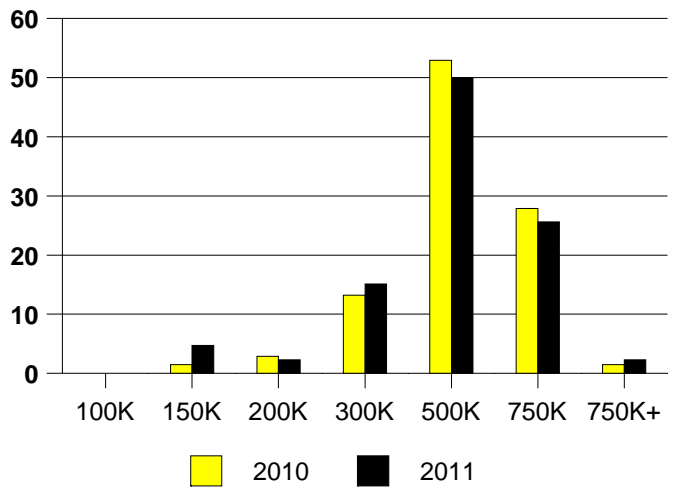
NTREIS Sold informaton as of 01/03/2012

	<u>2010</u>	<u>2011</u>
Total Sold Volume	\$ 29,526,930	\$ 36,301,546
Number of Sales	68	86
Median Sale Price	\$ 427,575	\$ 426,750

DAYS ON THE MARKET (LUCAS)



LUCAS MKT SHARE BY PRICE RANGE



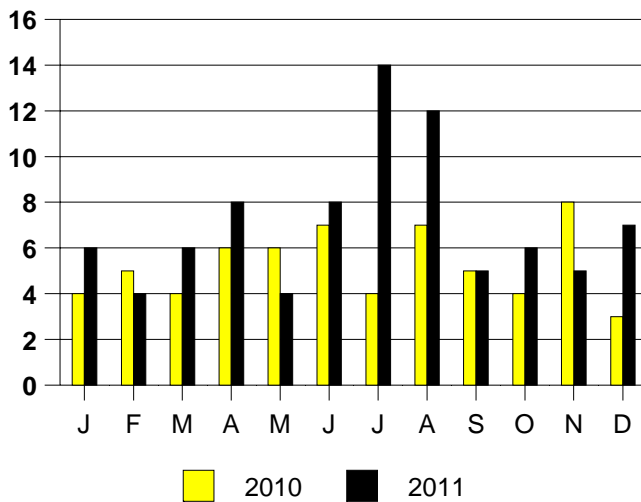
SALE/LIST PRICE RATIO

0K-100K	NONE
101K-150K	92.4%
151K-200K	99.6%
201K-300K	96.6%
301K-500K	97.6%
501K-750K	97.2%
751K+	90.5%

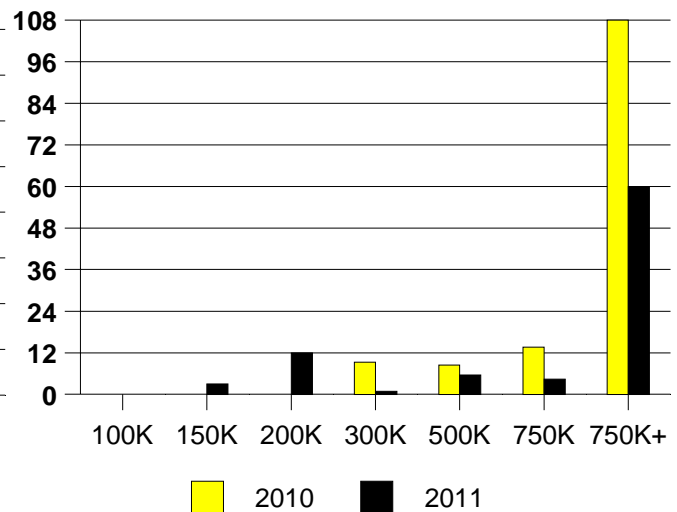
AVERAGE OVERPRICING  
Original List Price to Sale Price

2010	9.1%
2011	7.0%

LUCAS MONTHLY SALES

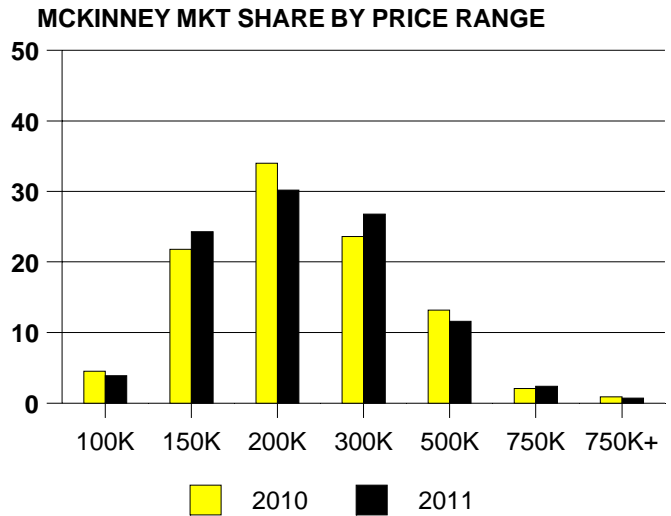
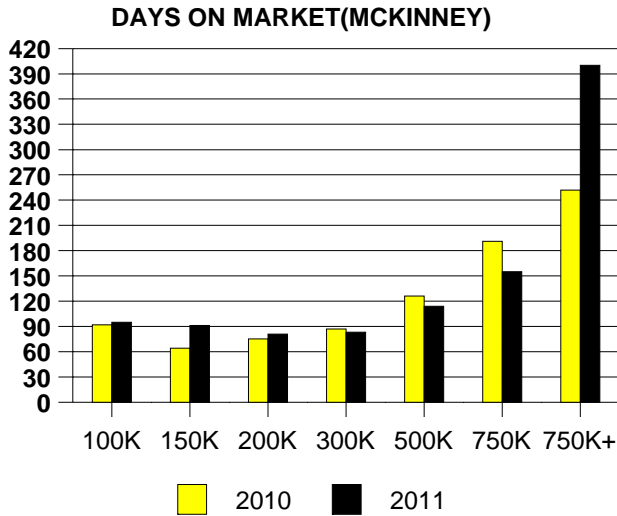


Inventory not shown where no sales  
LUCAS MONTHS OF INVENTORY



NTREIS Sold informaton as of 01/03/2012

	<u>2010</u>	<u>2011</u>
Total Sold Volume	\$ 487,845,712	\$ 500,526,562
Number of Sales	2223	2288
Median Sale Price	\$ 180,000	\$ 182,000



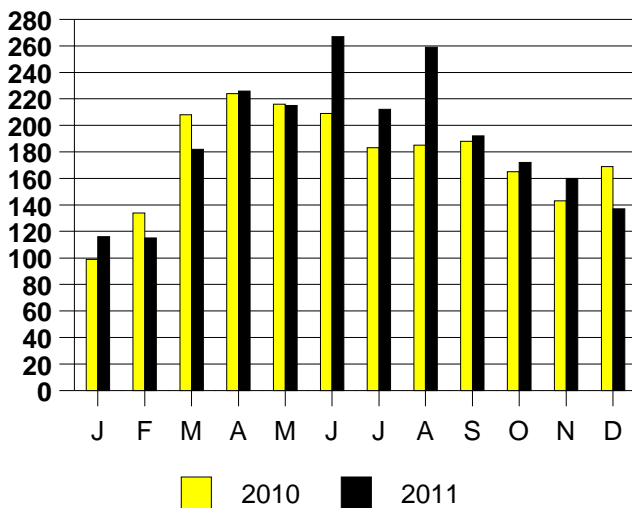
**SALE/LIST PRICE RATIO**

0K-100K	93.8%
101K-150K	97.3%
151K-200K	97.4%
201K-300K	96.3%
301K-500K	96.4%
501K-750K	95.8%
751K+	98.8%

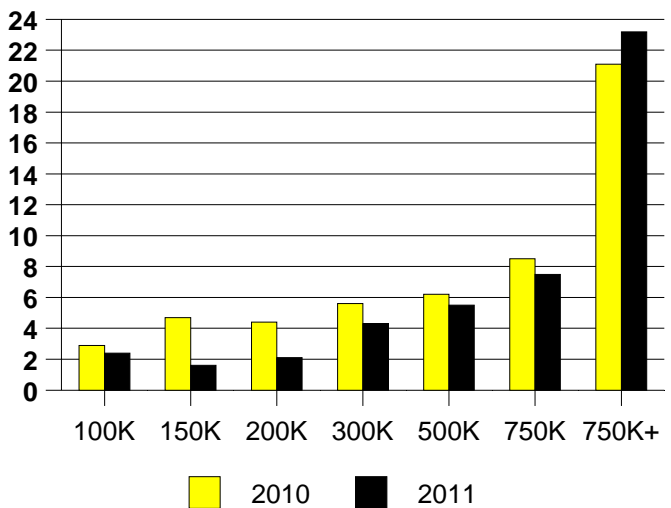
**AVERAGE OVERPRICING**  
Original List Price to Sale Price

2010	7.1%
2011	7.2%

**MCKINNEY MONTHLY SALES**



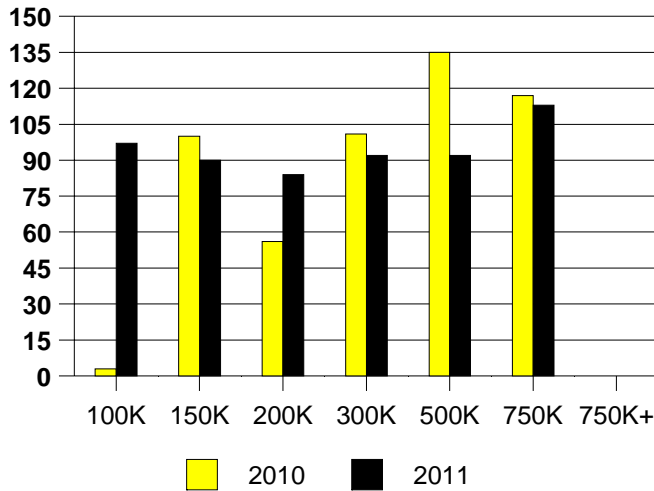
Inventory not shown where no sales  
**MCKINNEY MONTHS OF INVENTORY**



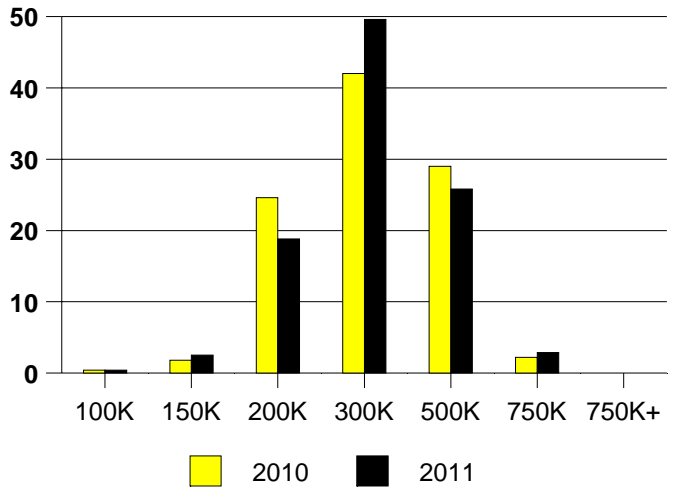
NTREIS Sold informaton as of 01/03/2012

	<u>2010</u>	<u>2011</u>
Total Sold Volume	\$60,839,778	\$ 66,295,197
Number of Sales	224	240
Median Sale Price	\$ 260,000	\$ 265,475

DAYS ON THE MARKET (MURPHY)



MURPHY MKT SHARE BY PRICE RANGE



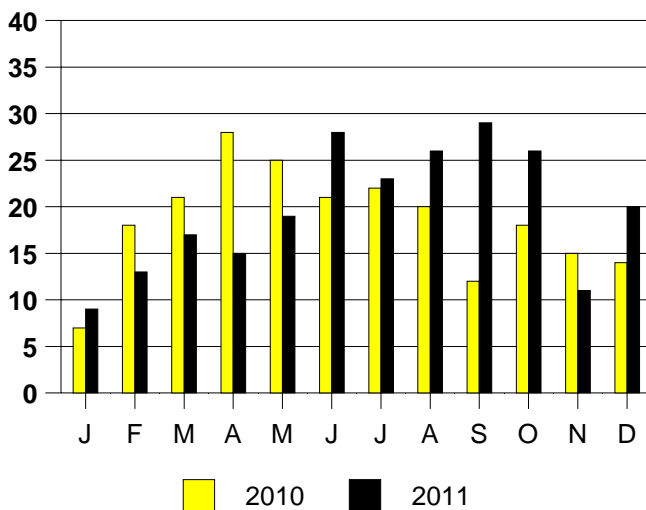
SALE/LIST PRICE RATIO

0K-100K	59.5%
101K-150K	92.8%
151K-200K	97.5%
201K-300K	96.9%
301K-500K	96.3%
501K-750K	94.7%
751K+	NONE

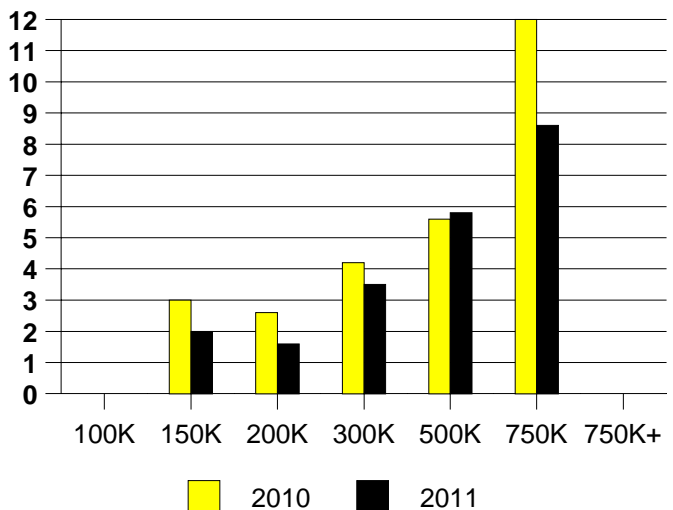
AVERAGE OVERPRICING  
Original List Price to Sale Price

2010	6.8%
2011	7.8%

MURPHY MONTHLY SALES



Inventory not shown where no sales  
MURPHY MONTHS OF INVENTORY

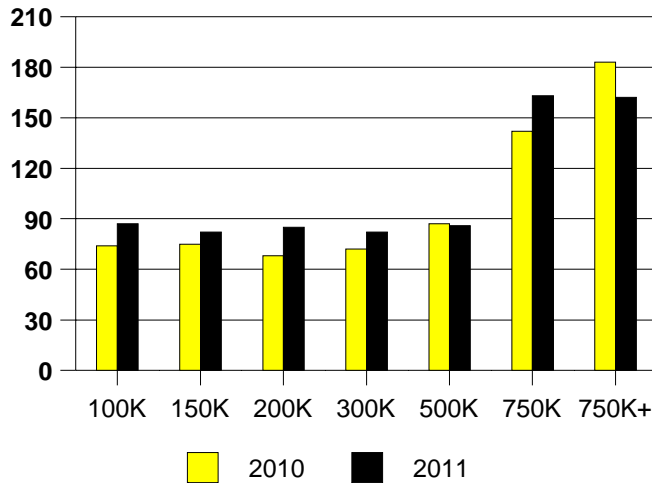


NTREIS Sold informaton as of 01/03/2012

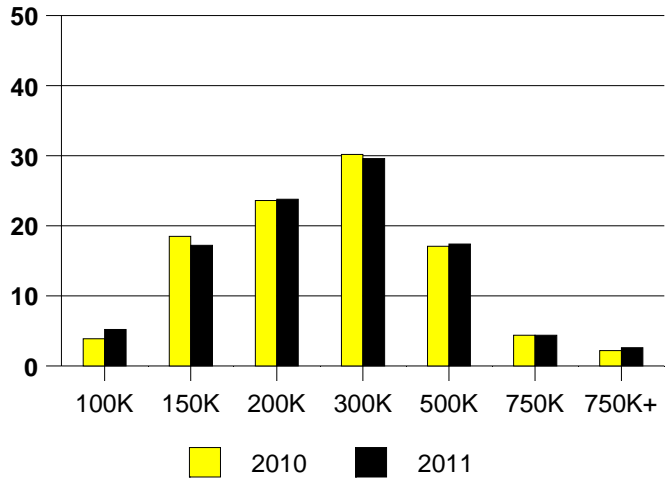


	<u>2010</u>	<u>2011</u>
Total Sold Volume	\$ 645,984,317	\$ 669,408,406
Number of Sales	2504	2572
Median Sale Price	\$ 212,000	\$ 210,000

**DAYS ON MARKET(PLANO)**



**PLANO MKT SHARE BY PRICE RANGE**



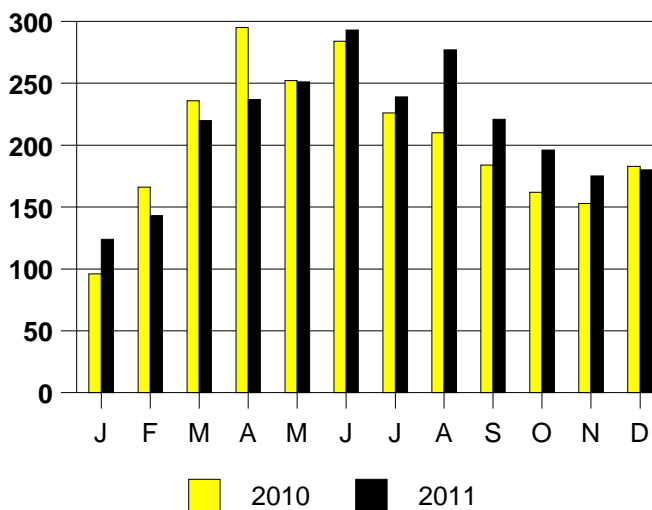
**SALE/LIST PRICE RATIO**

0K-100K	95.0%
101K-150K	96.6%
151K-200K	97.5%
201K-300K	96.8%
301K-500K	96.4%
501K-750K	95.7%
751K+	94.3%

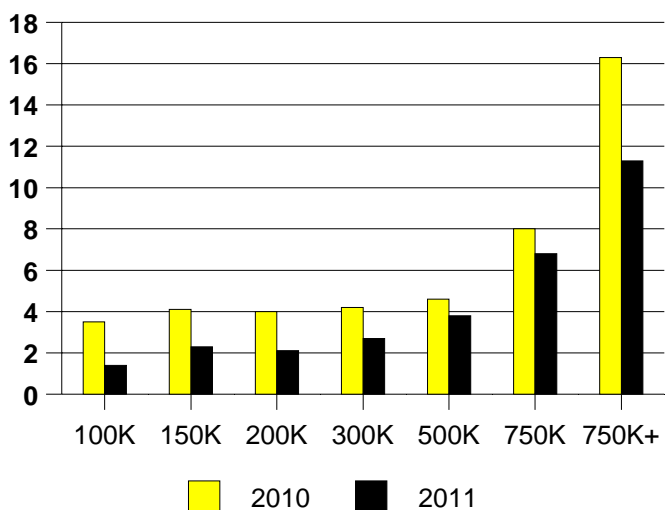
**AVERAGE OVERPRICING**  
Original List Price to Sale Price

2010	6.4%
2011	7.3%

**PLANO MONTHLY SALES**

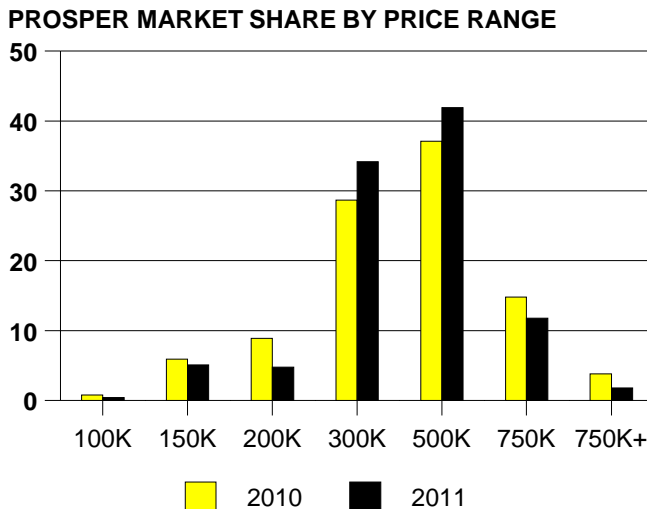
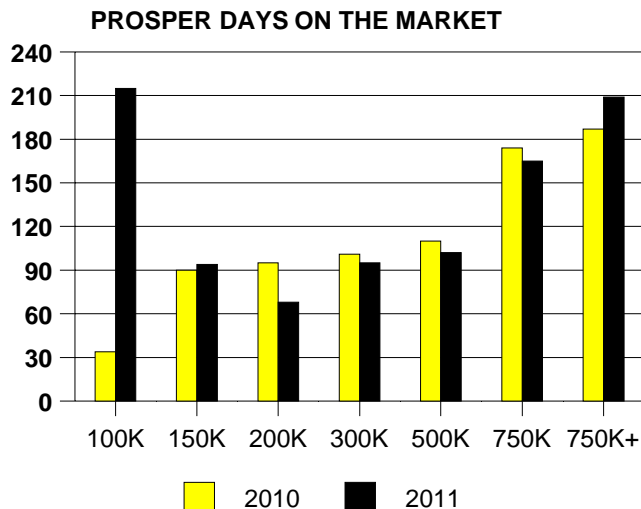


Inventory not shown where no sales  
**PLANO MONTHS OF INVENTORY**



NTREIS Sold informaton as of 01/03/2012

	<u>2010</u>	<u>2011</u>
Total Sold Volume	\$ 85,871,343	\$ 95,416,856
Number of Sales	237	272
Median Sale Price	\$ 325,000	\$ 311,015



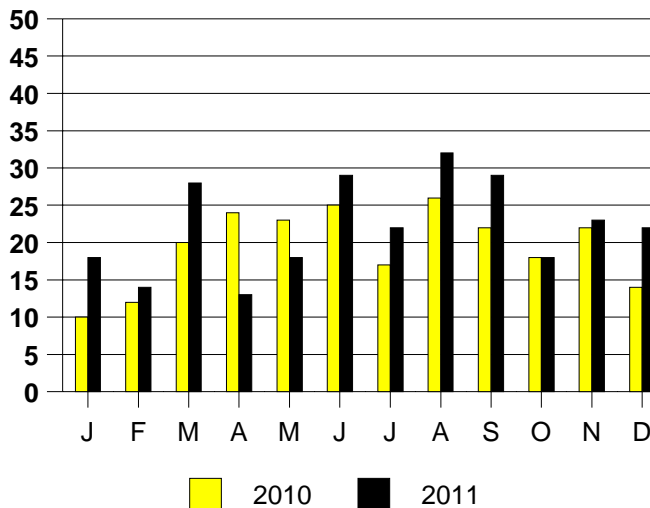
**SALE/LIST PRICE RATIO**

0K-100K	62.6%
101K-150K	93.5%
151K-200K	97.4%
201K-300K	96.6%
301K-500K	95.0%
501K-750K	96.8%
751K+	96.2%

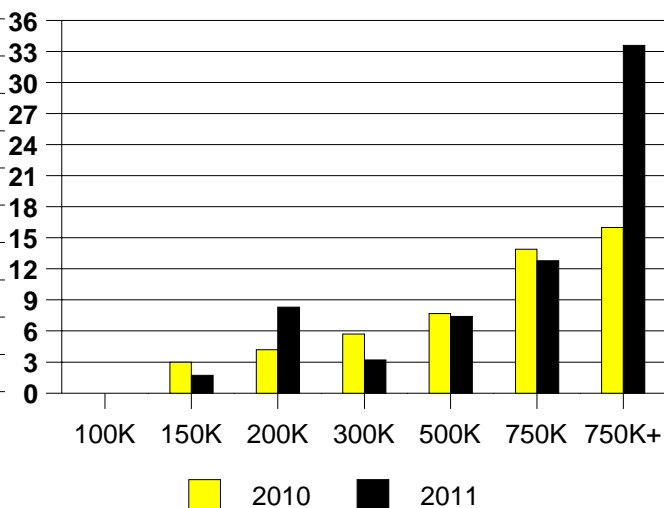
**AVERAGE OVERPRICING**  
Original List Price to Sale Price

2010	7.5%
2011	9.3%

**PROSPER MONTHLY SALES**

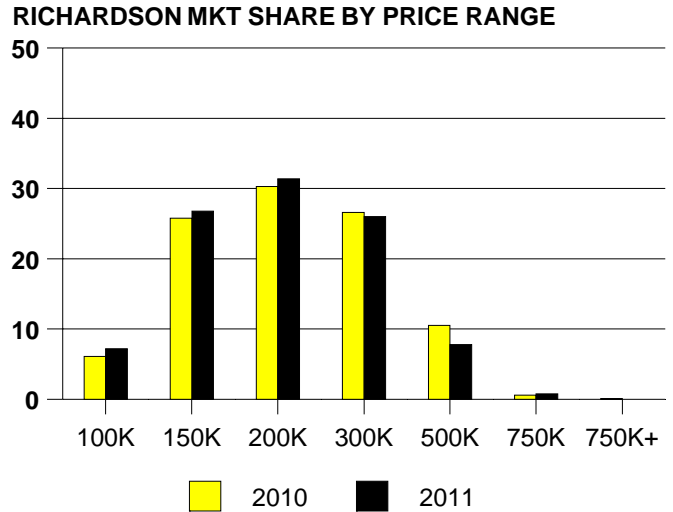
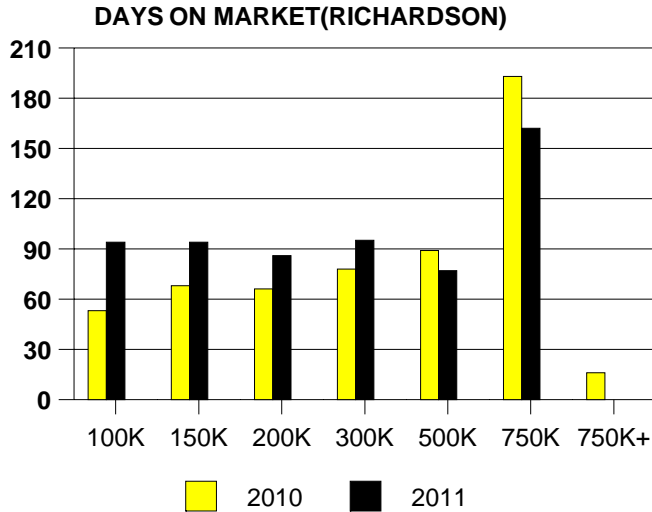


Inventory not shown where no sales  
**PROSPER MONTHS OF INVENTORY**



NTREIS Sold informaton as of 01/03/2012

	<u>2010</u>	<u>2011</u>
Total Sold Volume	\$ 167,664,923	\$ 165,138,270
Number of Sales	849	858
Median Sale Price	\$ 175,000	\$ 172,000



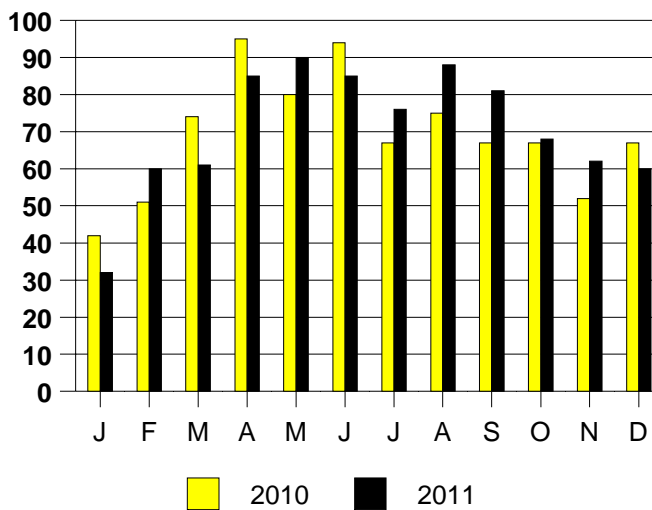
**SALE/LIST PRICE RATIO**

0K-100K	93.6%
101K-150K	96.3%
151K-200K	97.2%
201K-300K	96.6%
301K-500K	96.2%
501K-750K	96.6%
751K+	NONE

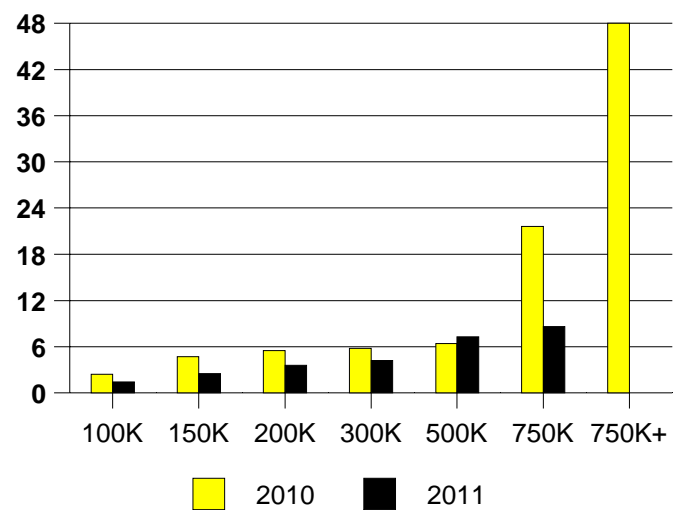
**AVERAGE OVERPRICING**  
Original List Price to Sale Price

2010	6.8%
2011	8.8%

**RICHARDSON MONTHLY SALES**



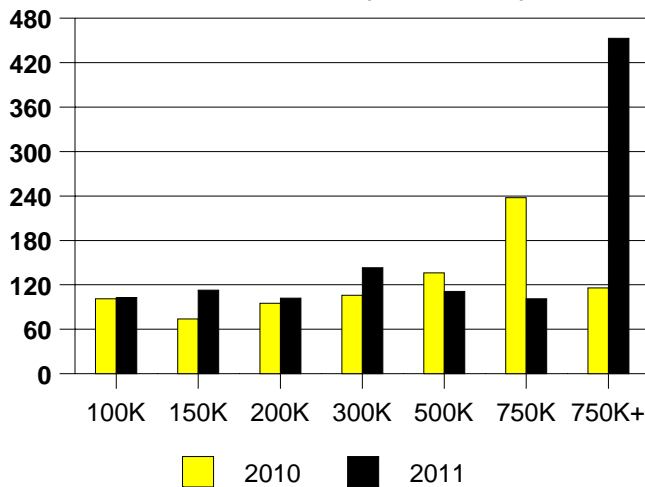
**RICHARDSON MONTHS OF INVENTORY**



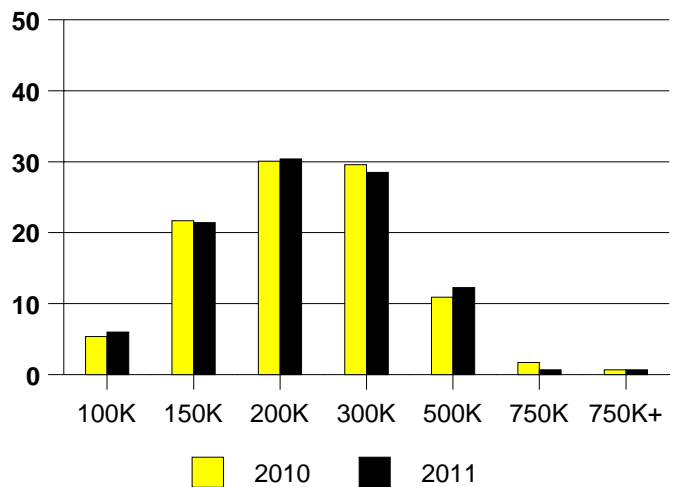
NTREIS Sold informaton as of 01/03/2012

	<u>2010</u>	<u>2011</u>
Total Sold Volume	\$ 127,154,003	\$ 122,738,926
Number of Sales	595	585
Median Sale Price	\$ 187,000	\$ 179,000

**DAYS ON THE MARKET (ROCKWALL)**



**ROCKWALL MKT SHARE BY PRICE RANGE**



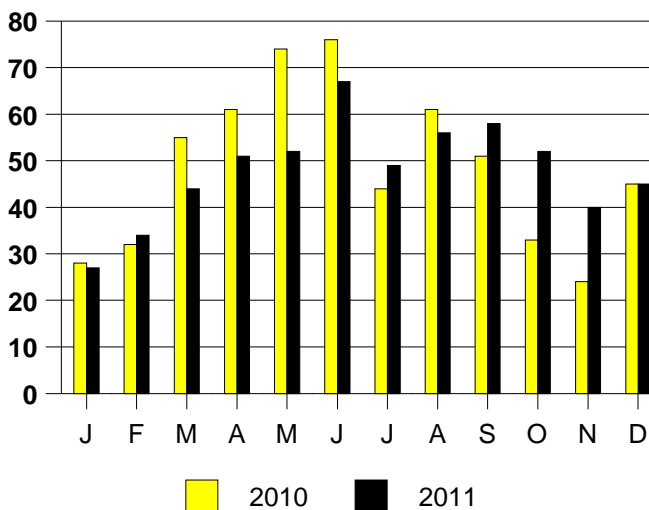
**SALE/LIST PRICE RATIO**

0K-100K	94.5%
101K-150K	96.8%
151K-200K	97.3%
201K-300K	95.8%
301K-500K	96.5%
501K-750K	93.9%
751K+	94.0%

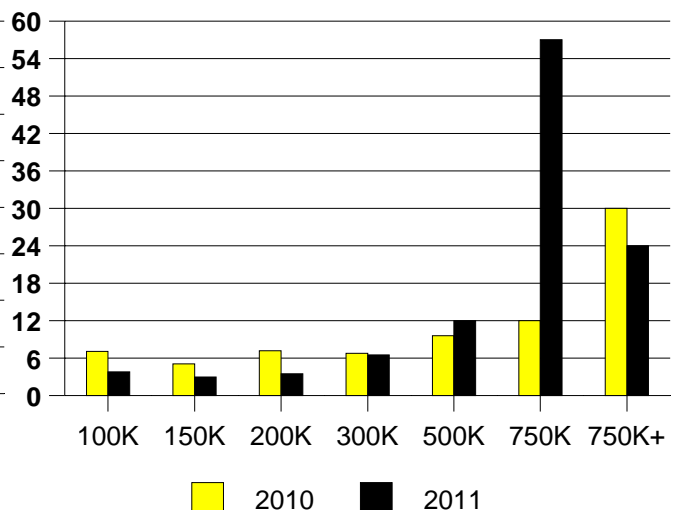
**AVERAGE OVERPRICING**  
Original List Price to Sale Price

2010	8.9%
2011	8.7%

**ROCKWALL MONTHLY SALES**



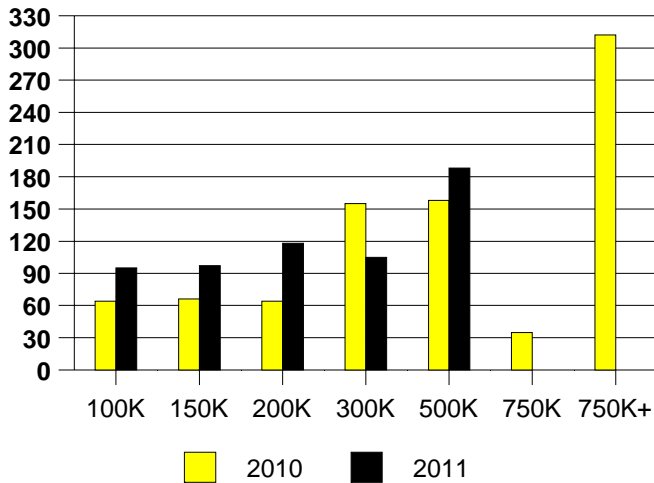
Inventory not shown where no sales  
**ROCKWALL MONTHS OF INVENTORY**



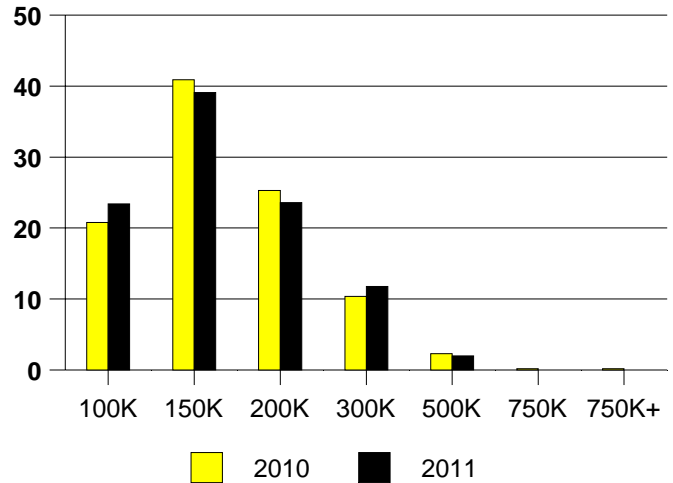
NTREIS Sold informaton as of 01/03/2012

	<u>2010</u>	<u>2011</u>
Total Sold Volume	\$ 96,524,299	\$ 91,974,425
Number of Sales	653	644
Median Sale Price	\$ 134,500	\$ 134,900

DAYS ON THE MARKET (ROWLETT)



ROWLETT MKT SHARE BY PRICE RANGE



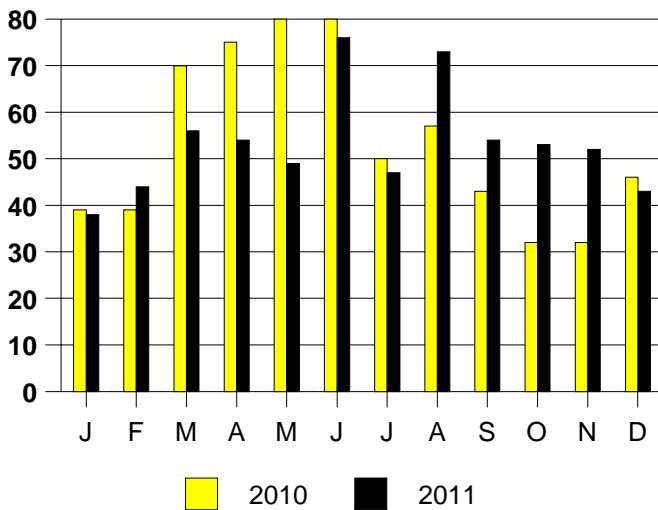
SALE/LIST PRICE RATIO

0K-100K	94.1%
101K-150K	97.9%
151K-200K	97.6%
201K-300K	97.1%
301K-500K	93.1%
501K-750K	NONE
751K+	NONE

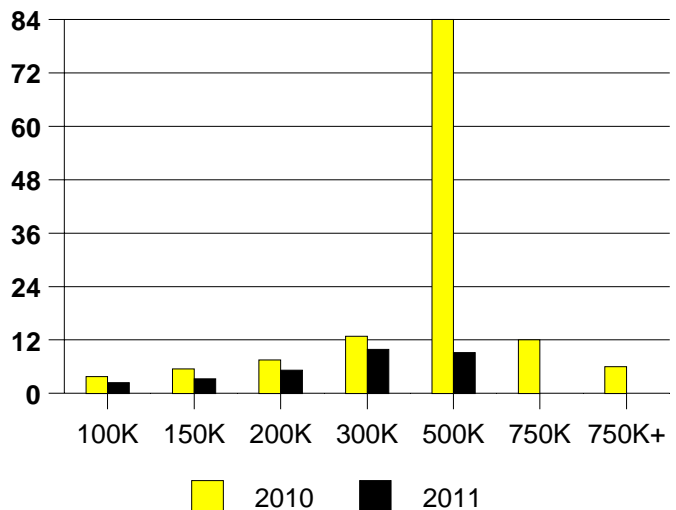
AVERAGE OVERPRICING  
Original List Price to Sale Price

2010	7.5%
2011	10.2%

ROWLETT MONTHLY SALES



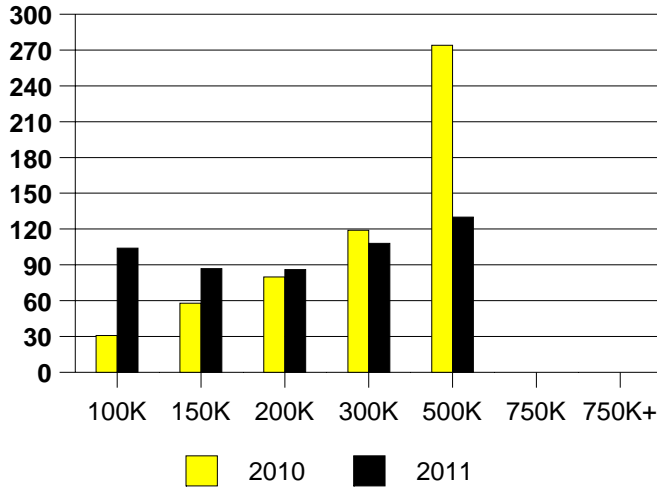
Inventory not shown where no sales  
ROWLETT MONTHS OF INVENTORY



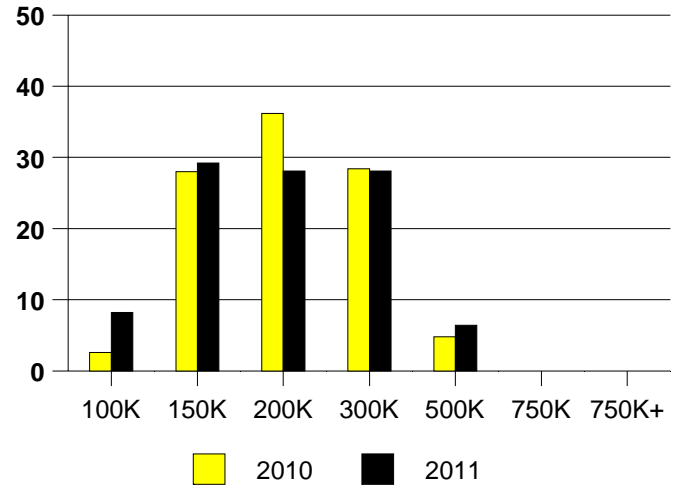
NTREIS Sold informaton as of 01/03/2012

	<u>2010</u>	<u>2011</u>
Total Sold Volume	\$ 51,176,972	\$ 51,584,730
Number of Sales	271	281
Median Sale Price	\$ 168,000	\$ 163,000

DAYS ON THE MARKET (SACHSE)



SACHSE MKT SHARE BY PRICE RANGE



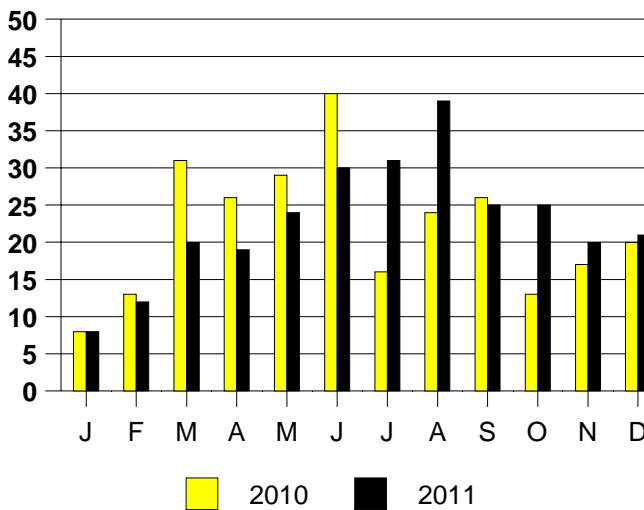
**SALE/LIST PRICE RATIO**

0K-100K	94.7%
101K-150K	97.2%
151K-200K	97.5%
201K-300K	94.2%
301K-500K	95.8%
501K-750K	NONE
751K+	NONE

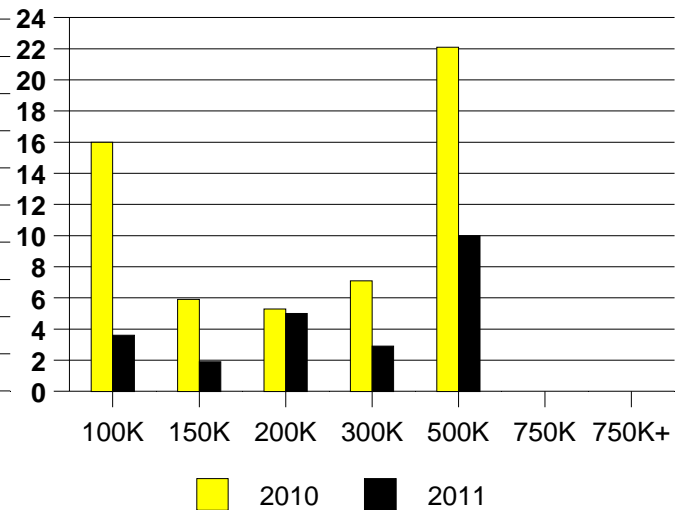
**AVERAGE OVERPRICING**  
Original List Price to Sale Price

2010	6.8%
2011	9.6%

SACHSE MONTHLY SALES



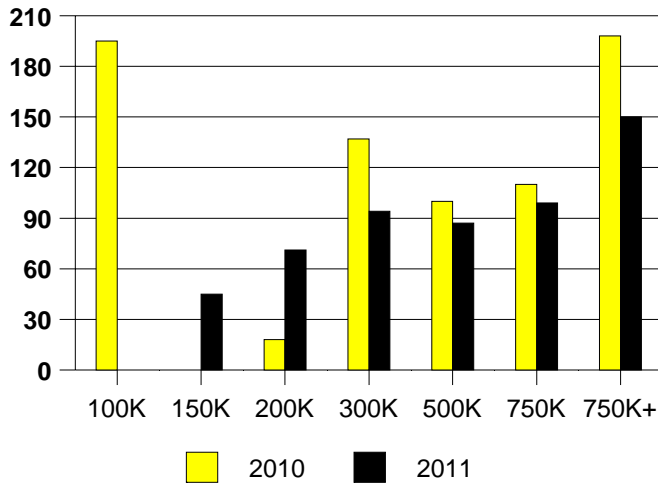
Inventory not shown where no sales  
SACHSE MONTHS OF INVENTORY



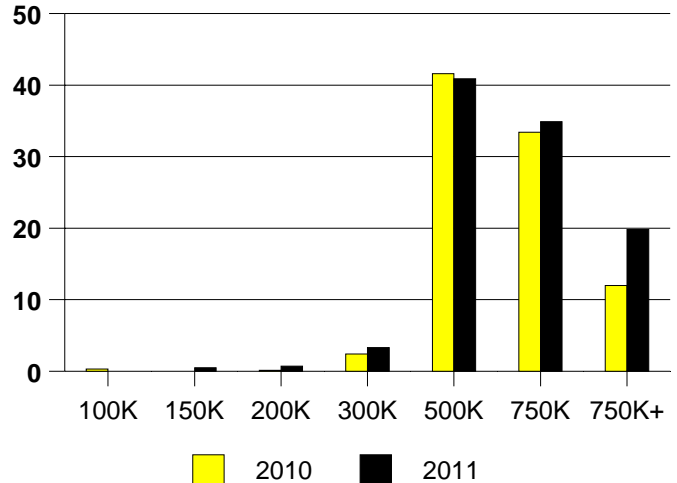
NTREIS Sold informaton as of 01/03/2012

	<u>2010</u>	<u>2011</u>
Total Sold Volume	\$ 248,800,391	\$ 264,455,246
Number of Sales	403	430
Median Sale Price	\$ 525,000	\$ 525,000

**DAYS ON THE MARKET (SOUTHLAKE)**



**SOUTHLAKE MKT SHARE BY PRICE RANGE**



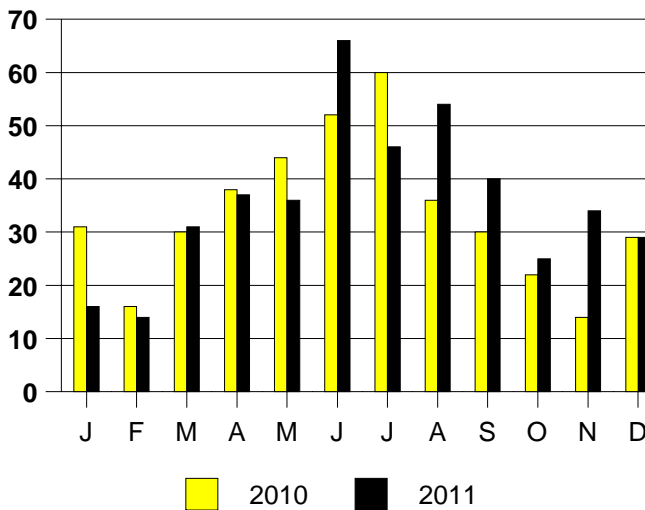
**SALE/LIST PRICE RATIO**

0K-100K	NONE
101K-150K	94.0%
151K-200K	92.0%
201K-300K	94.4%
301K-500K	96.8%
501K-750K	97.0%
751K+	95.4%

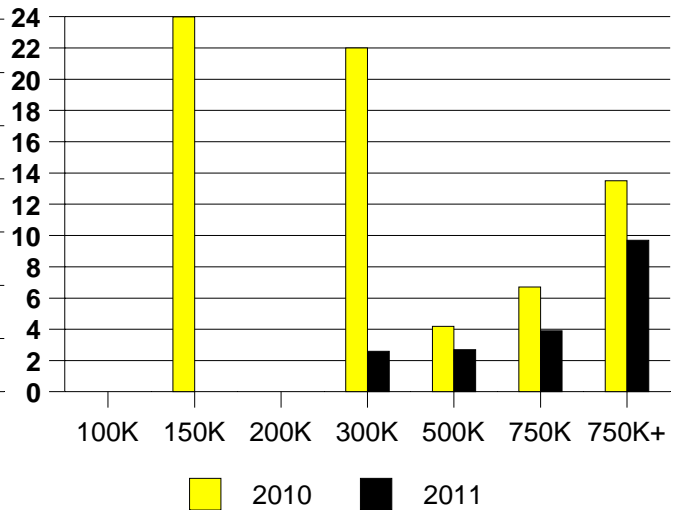
**AVERAGE OVERPRICING**  
Original List Price to Sale Price

2010	8.4%
2011	7.1%

**SOUTHLAKE MONTHLY SALES**



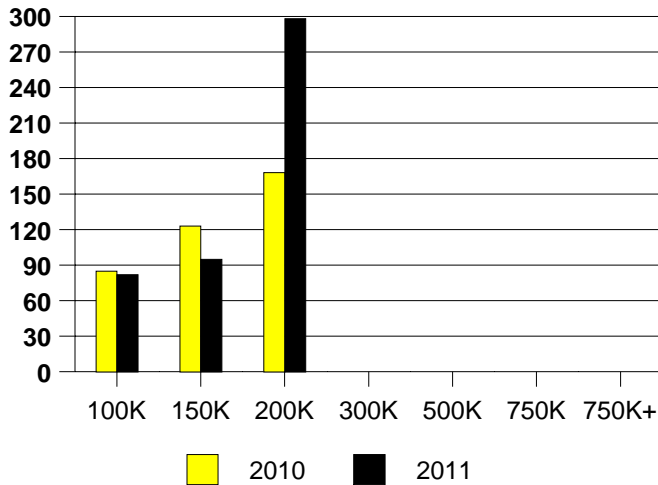
Inventory not shown where no sales  
**SOUTHLAKE MONTHS OF INVENTORY**



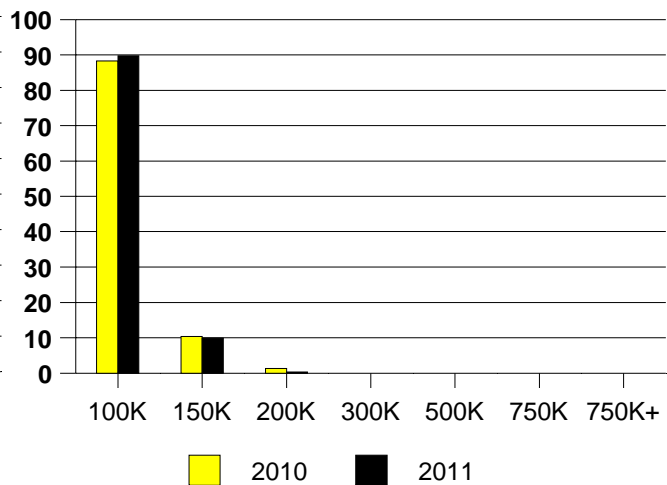
NTREIS Sold informaton as of 01/03/2012

	<u>2010</u>	<u>2011</u>
Total Sold Volume	\$29,062,310	\$ 23,139,091
Number of Sales	453	392
Median Sale Price	\$ 63,350	\$ 55,000

**DAYS ON THE MARKET (OAK CLIFF)**



**OAK CLIFF MKT SHARE BY PRICE RANGE**



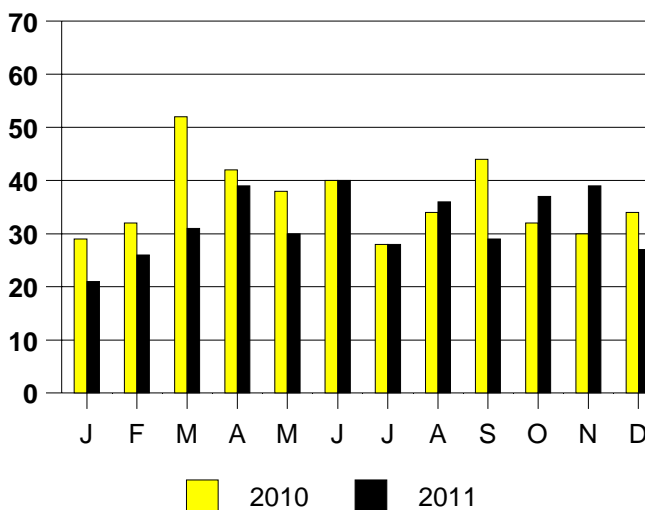
**SALE/LIST PRICE RATIO**

0K-100K	97.1%
101K-150K	98.7%
151K-200K	102.0%
201K-300K	NONE
301K-500K	NONE
501K-750K	NONE
751K+	NONE

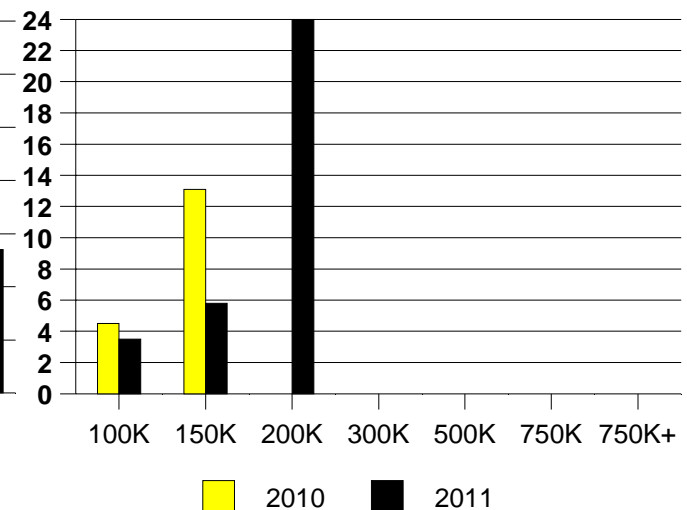
**AVERAGE OVERPRICING**  
Original List Price to Sale Price

2010	13.5%
2011	13.5%

**OAK CLIFF MONTHLY SALES**



Inventory not shown where no sales  
**OAK CLIFF MONTHS OF INVENTORY**

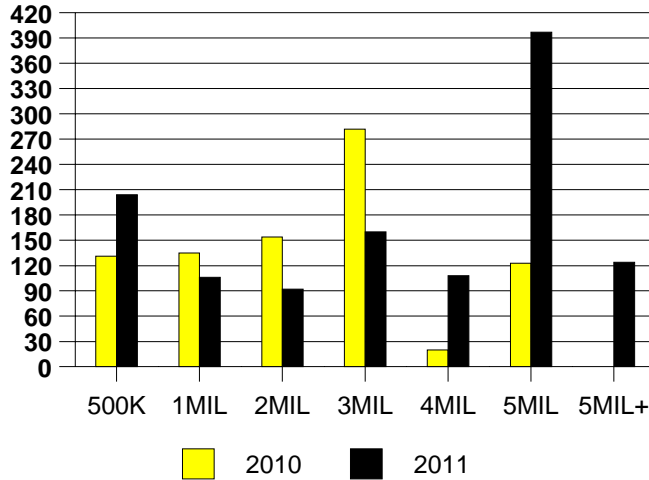


NTREIS Sold informaton as of 01/03/2012

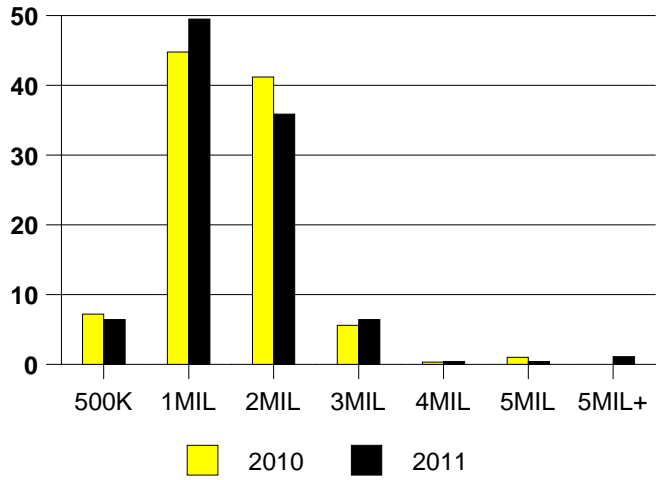


	<u>2010</u>	<u>2011</u>
Total Sold Volume	\$ 342,585,206	\$ 328,039,807
Number of Sales	306	281
Median Sale Price	\$ 990,550	\$ 935,000

DAYS ON THE MARKET (UNIV PARK)



MKT SHARE BY PRICE RANGE(UP)



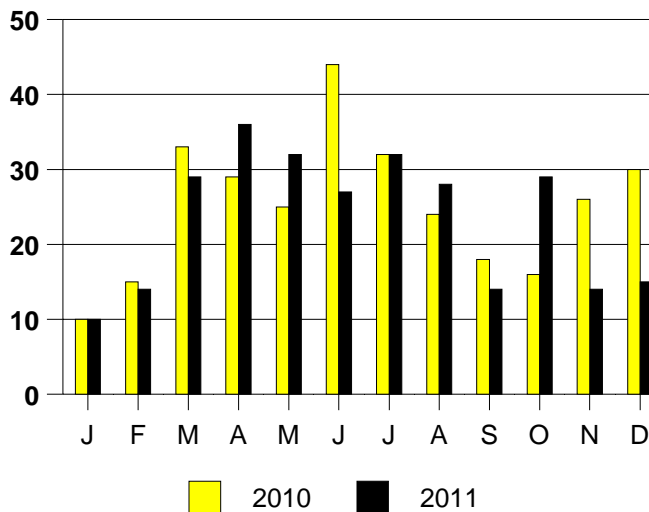
SALE/LIST PRICE RATIO

0K-500K	94.0%
501K-1MIL	95.7%
1MIL-2MIL	96.1%
2MIL-3MIL	95.3%
3MIL-4MIL	94.5%
4MIL-5MIL	94.3%
5MIL+	95.3%

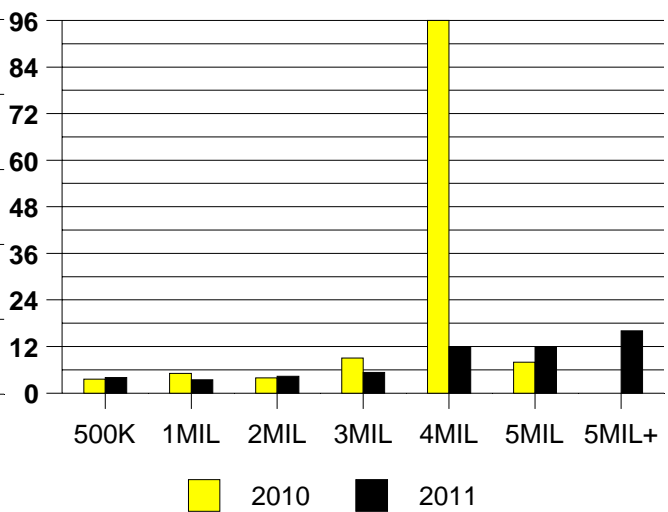
AVERAGE OVERPRICING

Orig List Price to Sale Price	
2010	12.0%
2011	9.1%

UNIVERSITY PARK MONTHLY SALES



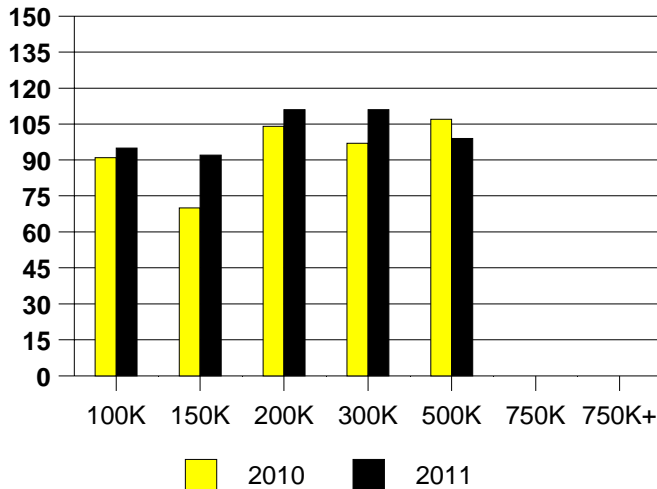
Inventory not shown where no sales  
UNIV PARK MONTHS OF INVENTORY



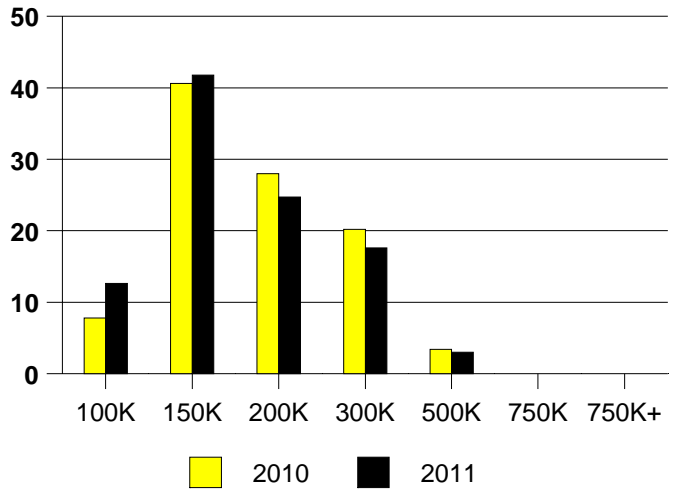
NTREIS Sold information as of 01/03/2012

	<u>2010</u>	<u>2011</u>
Total Sold Volume	\$ 98,789,526	\$ 94,333,250
Number of Sales	593	595
Median Sale Price	\$ 152,500	\$ 145,000

**DAYS ON THE MARKET (WYLIE)**



**WYLIE MKT SHARE BY PRICE RANGE**



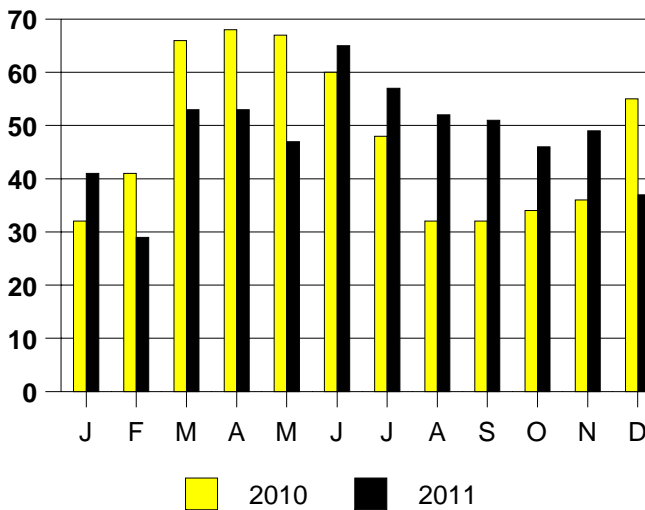
**SALE/LIST PRICE RATIO**

0K-100K	92.6%
101K-150K	97.5%
151K-200K	97.1%
201K-300K	96.2%
301K-500K	96.8%
501K-750K	NONE
751K+	NONE

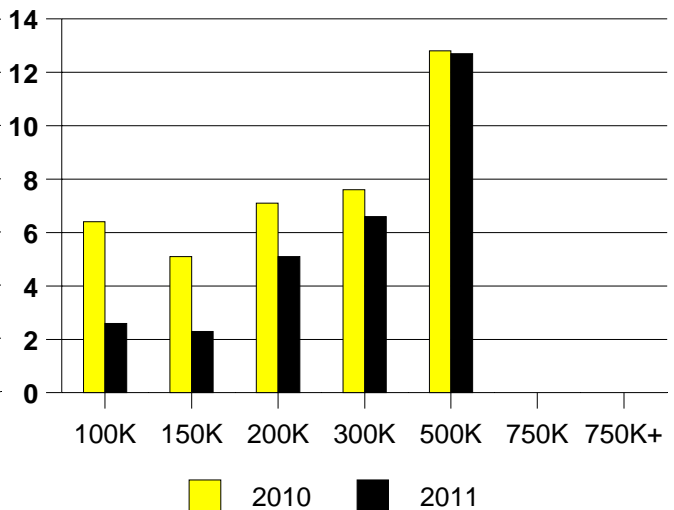
**AVERAGE OVERPRICING**  
Original List Price to Sale Price

2010	7.2%
2011	9.2%

**WYLIE MONTHLY SALES**



Inventory not shown where no sales  
**WYLIE MONTHS OF INVENTORY**



NTREIS Sold informaton as of 01/03/2012